

HYDRAULIC CRIMPING TOOL

FEATURES:

- For interchangeable dies,
- Crimping head, C-type, rotates 360°
- Two stage hydraulics
- Automatic retraction when crimping is complete
- Manual retract in case of need

EBCHQ



Hydraulic crimping tool

Item No:HT-400 safety system inside

99300

Crimping range:	Cu 16–400mm ²
Crimping force:	130KN
Stroke:	42mm
Length:	560mm
Weight:	7.5kg
Package:	steel case
Crimping type:	hexagon crimping
Weight of box:	3.5kg

Accessories:
crimping dies: 16, 25, 35, 50, 70, 95, 120, 150, 185, 240, 300, 400mm²



EBCHQ



Ponchadora hidraulica 6AWG a 800MCM

Item No: CYO-400C

99305

Tipo de conector: Tubular

Número de Dados: 12

Tipos de Dados: 16, 25, 35, 50, 70, 95, 120, 150, 185, 240, 300 y 400mm²

Rango de cable: 6 AWG - 800MCM



AWG(MCM)	DIN
6	16
4	25
2	35
1/0	50
2/0	70
3/0	95
250 MCM	120
300 MCM	150
350 MCM	185
400 MCM	240
600 MCM	300
800 MCM	400

Peso neto: 6.6 Kgs

Accesorios: Caja de acero (1.8Kg)

Fuerza: 13Ton.

Carrera: 22mm

Origen: China

99315

FEATURES:

●Hydraulic crimping tool is a professional tool for crimping copper and aluminum lugs with different types, a wide range of crimping dies from 4mm² to 1000mm² to suit for different size demand. The main crimping shape is hexagonal, special shape design is provided by special making.

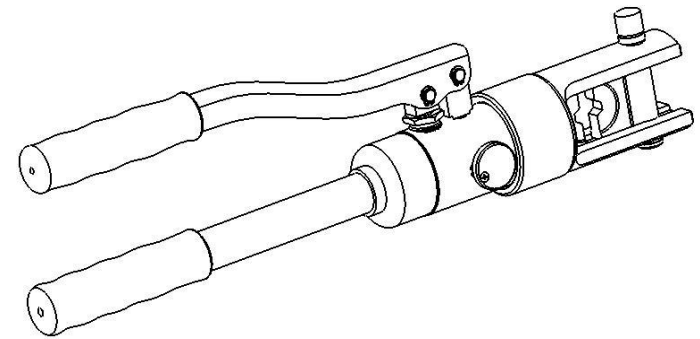
EBCHQ



Crimping range:	Cu16–300mm ²
Crimping force:	16T
Crimping type:	hexagon crimping
Stroke:	22mm
Length:	approx.500mm
Weight:	approx.6.30kg
Package:	plastic box
Weight of box:	approx.1.21kg
Accessories:	
crimping dies: 16, 25, 35, 50, 70, 95, 120, 150, 185, 240, 300mm ²	
Sealing O–ring: one set	

Instruction Manual

Hydraulic Crimping Tool YQK Series



Due to continuing improvements, actual product may differ slightly from the product described herein.



Read this material before using this product.

Failure to do so can result in serious injury.

SAVE THIS MANUAL

LIMITED 1 YEAR WARRANTY

We make every effort to assure that its products meet high quality and durability standards, and warrants to the original purchaser that this product is free from defects in materials and workmanship for the period of one year from the date of purchase (90 days if used by a professional contractor or if used as rental equipment). This warranty does not apply to damage due directly or indirectly, to misuse, abuse, negligence or accidents, repairs or alterations outside our facilities, normal wear and tear, or to lack of maintenance. We shall in no event be liable for death, injuries to persons or property, or for incidental, contingent, special or consequential damages arising from the use of our product. Some states do not allow the exclusion or limitation of incidental or consequential damages, so the above limitation of exclusion may not apply to you. THIS WARRANTY IS EXPRESSLY IN LIEU OF ALL OTHER WARRANTIES, EXPRESS OR IMPLIED, INCLUDING THE WARRANTIES OF MERCHANTABILITY AND FITNESS.

To take advantage of this warranty, the product or part must be returned to us with transportation charges prepaid. Proof of purchase date and an explanation of the complaint must accompany the merchandise. If our inspection verifies the defect, we will either repair or replace the product at our election or we may elect to refund the purchase price if we cannot readily and quickly provide you with a replacement. We will return repaired products at our expense, but if we determine there is no defect, or that the defect resulted from causes not within the scope of our warranty, then you must bear the cost of returning the product.

The warranty gives you specific legal rights and you may also have other rights which vary from place to place.

PLEASE READ THE FOLLOWING CAREFULLY

THE MANUFACTURER AND/OR DISTRIBUTOR HAS PROVIDED THE PARTS LIST AND ASSEMBLY DIAGRAM IN THIS MANUAL AS A REFERENCE TOOL ONLY. NEITHER THE MANUFACTURER NOR DISTRIBUTOR MAKES ANY REPRESENTATION OR WARRANTY OF ANY KIND TO THE BUYER THAT HE OR SHE IS QUALIFIED TO MAKE ANY REPAIRS TO THE PRODUCT, OR THAT HE OR SHE IS QUALIFIED TO REPLACE ANY PARTS OF THE PRODUCT. IN FACT, THE MANUFACTURER AND/OR DISTRIBUTOR EXPRESSLY STATES THAT ALL REPAIRS AND PARTS REPLACEMENTS SHOULD BE UNDERTAKEN BY CERTIFIED AND LICENSED TECHNICIANS, AND NOT BY THE BUYER. THE BUYER ASSUMES ALL RISK AND LIABILITY ARISING OUT OF HIS OR HER REPAIRS TO THE ORIGINAL PRODUCT OR REPLACEMENT PARTS THERETO, OR ARISING OUT OF HIS OR HER INSTALLATION OF REPLACEMENT PARTS THERETO.

SAVE THIS MANUAL

Keep this manual for the safety warnings and precautions, assembly, operating, inspection, maintenance and cleaning procedures. Write the month and year of purchase. Keep this manual and the receipt in a safe and dry place for future reference.

IMPORTANT SAFETY INFORMATION

In this manual, on the labeling, and all other information provided with this product:



This is the safety alert symbol. It is used to alert you to potential personal injury hazards. Obey all safety messages that follow this symbol to avoid possible injury or death.



DANGER indicates a hazardous situation which, if not avoided, will result in death or serious injury.



WARNING indicates a hazardous situation which, if not avoided, could result in death or serious injury.



CAUTION, used with the safety alert symbol, indicates a hazardous situation which, if not avoided, could result in minor or moderate injury.

GENERAL SAFETY RULE

TO WORK IN SAFE CONDITIONS WITH THIS TOOLING, IT IS IMPERATIVE TO READ CAREFULLY THE DIRECTIONS FOR USE AND TO FOLLOW THE INSTRUCTIONS IT CONTAINS. IF YOU DO NOT RESPECT THE INFORMATION WRITTEN IN THAT INSTRUCTION MANUAL THE WARRANTY WILL BE CANCELLED.

1. Work area safety

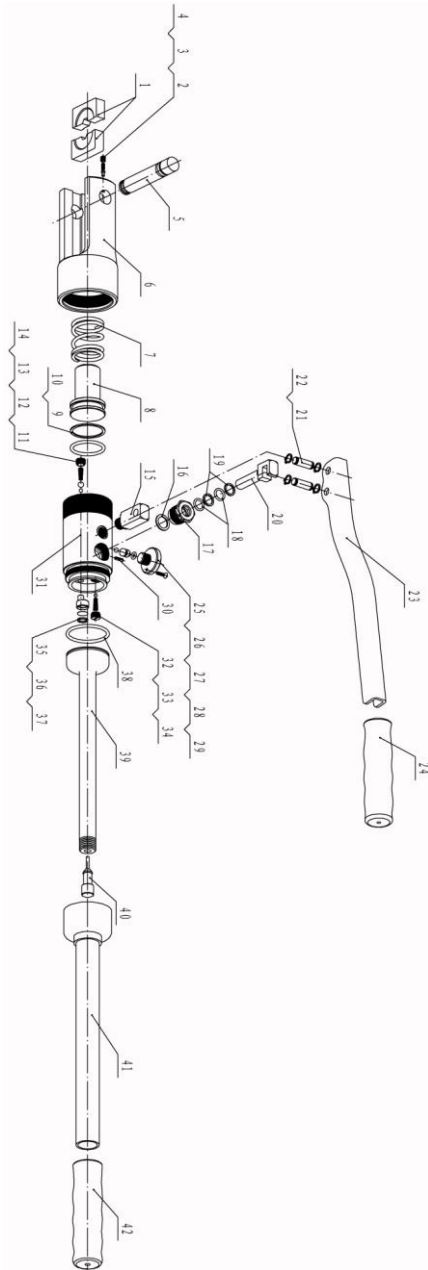
- a. Keep work area clean and well lit. Cluttered or dark areas invite accidents.
- b. This tool is not insulated; please do not use it on live conductor.
- c. Keep children and bystander away while operating the hydraulic crimping tool. Distractions will cause you to lose control.
- d. Please do not use or store this tool under high temperature, or one surrounding filling with corrosive fluid. Pay attention to the sealing kits becoming aging.

2. Personal safety

- a. Stay alert, watch what you are doing and use common sense when operating the tool. Do not use the tool while you are tired or still under the influence of drugs, alcohol or medication. A moment of inattention may result in series personal injury.
- b. Use safety equipment. Always use safety equipment such as mask, helmet, safety cap, insulating shoes and etc to reduce the risk of personal injury.
- c. Please use the tool properly, the tool with correct power will do the job better and safer at the rate for which it was designed.
- d. Do not put your fingers in the head of the hydraulic crimping tool during operating. Your fingers could be pinched very severely.

No	Description	Qty	No	Description	Qty
1	die	1 set	22	A type retainer ring	4
2	bolt	1	23	active handle	1
3	spring	1	24	handle cover	1
4	pin	1	25	H type bolt M3x10	1
5	latch	1	26	screw	1
6	head	1	27	O-ring 4x2	1
7	Piston spring	1	28	plunger	1
8	piston	1	29	steel ball C5	1
9	plastic retainer ring	1	30	Pin 3x10	1
10	O-ring	1	31	cylinder	1
11	steel ball C4	1	32	valve	1
12	steel ball C6	1	33	Conical spring	1
13	spring	1	34	steel ball C4	1
14	valve	1	35	Oil cup	1
15	stander	1	36	fliter sieve	1
16	copper gasket	1	37	plastic retainer ring	1
17	bolt	1	38	O-ring 29.8x3.1	1
18	O-ring 10x2	2	39	oil sac	1
19	plastic retainer ring	2	40	Plug cock	1
20	plunger	1	41	fixed handle	1
21	pin	1	42	handle cover	1

Parts list



3. Service

Have your Hydraulic Crimping Tool serviced by a qualified service technician using only identical replacement parts. This will ensure that the safety of the Hydraulic Crimping Tool Kit is maintained.

SPECIFIC SAFETY RULES

1. Maintain labels and nameplates on the tool which carry important safety information. If unreadable or missing, contact the agent to replace.
2. This product is not a toy, keep it out of reach of children.
3. Do not slide your fingers in the dies profile.
4. Do not put your fingers in the head of the hydraulic crimping tool when you slide the dies inside it. Your fingers could be pinched very severely.
5. Do not use the tool without die.
6. Do not crimp on live cables or conductors
7. Do only crimp cooper or Al conducting material
8. The warnings, precautions, and instructions discussed in this instruction manual cannot cover all possible conditions and situations that may occur. It must be understood by the operator that common sense and caution are factors which cannot be built into this product, but must be supplied by the operator.



SAVE THIS INSTRUCTIONS

UNDERSTAND YOUR TOOL

YQK series are the tools for connecting lugs and cable. It carries many advantages of good design, easy operation, high pressure, high efficiency etc. They are the perfect tool to be used in electric construction site.

1 . Specification

Item	YQK-240	YQK-300
Crimping range:	Cu 16-240mm ²	Cu 10-300mm ²
Crimping force:	100KN	100KN
Crimping type:	hexagon crimping	hexagon crimping
Stroke:	22mm	22mm
Length:	approx 480mm	approx 500mm
Weight:	approx3.60kg	approx3.60kg
Package:	plastic box	plastic box
Weight of box:	approx1.20kg	approx1.20kg
Accessories		
crimping die	16.25.35.50.70.95.120.150. 185.240 mm ²	10.16.25.35.50.70.95.120.1 50.185.240.300 mm ²
Sealing O-ring:	one set	one set



The dust or air inside the tool will damage the sealing kit so caused the tool lose function. Make sure the oil is clear and no dust entering into oil when changing oil. Wait for a while and exhaust the oil completely out of the oil tube before inserting the oil plug.

CAUTION

Please wear the rubber gloves to avoid skin touching the oil directly, if touches it in careless, please wash the skin by soap water in timely. In order to protect the environment please drain the waste oil to the treatment center where was approved by government.

TROUBLESHOOTING

FAULT	ANALYSIS	SOLUTION
A. No pressure or the pressure is not enough during operation	<ol style="list-style-type: none"> The pump lack oil There is dust exist in oil Inner leakage 	<ol style="list-style-type: none"> Fulfill or replace the oil Change the oil Contact manufacturer or distributor
B. The lug and wire do not connect tightly after crimping.	<ol style="list-style-type: none"> The tool can not reach to the rated pressure Use the wrong die 	<ol style="list-style-type: none"> Refer to the fault A Replace with the right die
C. Generate a lot of burs after crimping	<ol style="list-style-type: none"> Use the wrong die 	<ol style="list-style-type: none"> Replace with the right die
D. Oil leakage on the head or on the ram	<ol style="list-style-type: none"> Sealing kit broken 	<ol style="list-style-type: none"> Contact manufacturer or distributor and replace it by trained person

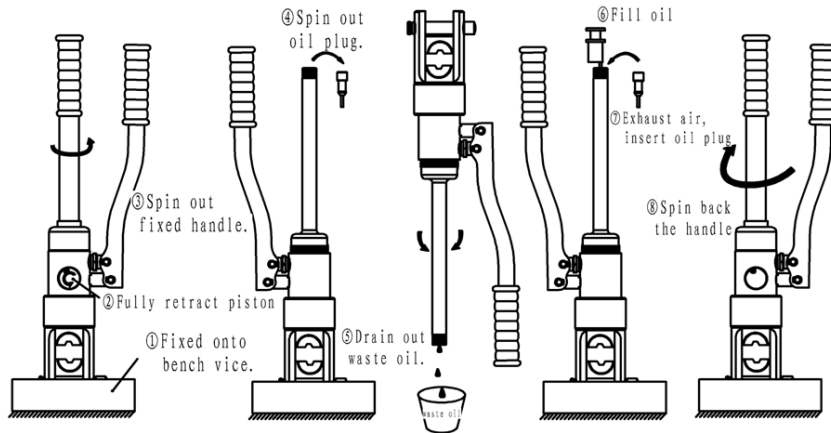
MAINTENANCE AND SERVICING

⚠WARNING

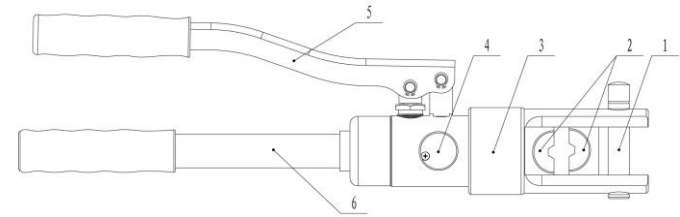
Damaged equipment may cause serious personal injury. Do not use damaged equipment. If abnormal noise or vibration occurs, have the problem corrected before further using.

1. **Before each using**, inspect the general condition of the tool. Check for loose screws, misalignment or binding of moving parts, cracked or broken parts, or any other condition that may affect its safe operation.
2. **After using**, clean external surfaces of the tool with clean, moist, smear the rust preventing oil on the metal surface of the tool and the dies to avoid rusty. Store the tool in the dry environment.
3. Service to the tool should only be done by a qualified Service Technician.
4. After a long time using, the sealing kits will be damaged, if there is leakage please contact with the manufacturer and/or the distributor to change the sealing kits.

How to change the oil.



2 . Description of the components.



Code	Name	Function
1	Latch	for fixing upper die
2	Die	for crimping, interchangeable crimping die
3	Down die holder	for fixing down die
4	Screw	for releasing pressure and retracting piston
5	Active handle	for operating
6	Fixed handle	for storing oil

OPERATING INSTRUCTIONS.

Read the entire SAFETY INFORMATION section at the beginning of this manual including all text under subheadings therein before using this product.

⚠CAUTION

Please do not knock any parts of the tool, otherwise it is dangerous for operator.

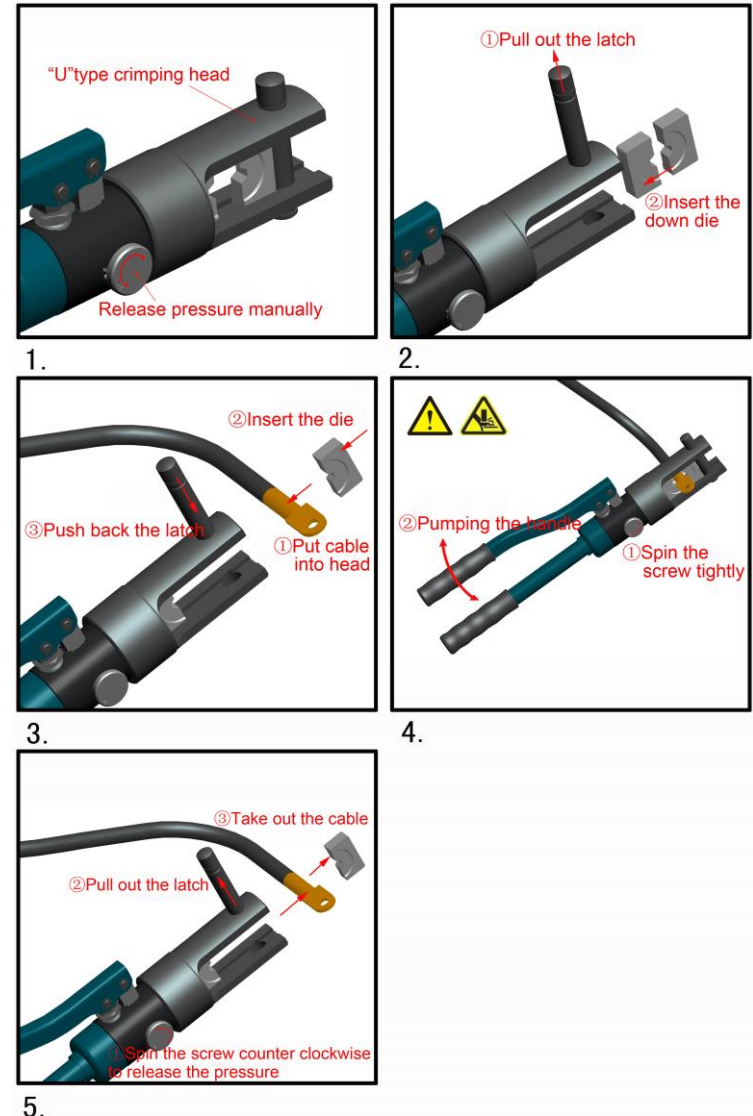
1. Select the appropriate die set. Ask an authorized facility or distributor to choose proper compression die set for the connector and cable being used.

⚠CAUTION Don't operate the tool without dies.

2. Insert the upper and down crimping die to match the die holder when both die halves are in place.
3. Make sure both dies halves are secured before operating the tool.
4. Fully insert the cable into the barrel of the connector.
5. Place the connector between the dies, Pump the handle until reach to the maximum pressure, then spin the screw to release the pressure manually.
6. The piston will retract, take out the connector, the tool is ready for its next cycle.

⚠DANGER

Do not put your fingers into the head of the tool during operating. Your fingers could be pinched very severely.



⚠CAUTION

The tool is not insulated, please do not use it on the live conductor to avoid injury occurring.

EBC HQ

99320

Item No:YYQ-120A

Ponchadora hidraulica 8AWG a 250MCM



Tipo de conector: Tubular

Número de Dados: 8

Tipos de Dados: 10, 16, 25, 35, 50, 70, 95, 120mm²

Rango de cable: 8 AWG - 250MCM

AWG	DIN
8	10
6	16
4	25
2	35
1/0	50
2/0	70
3/0	95
250 MCM	120

Peso neto: 4,20 Kgs

Accesorios: Caja Plastica (0,81Kg)

Fuerza: 12Ton.

Carrera: 14mm

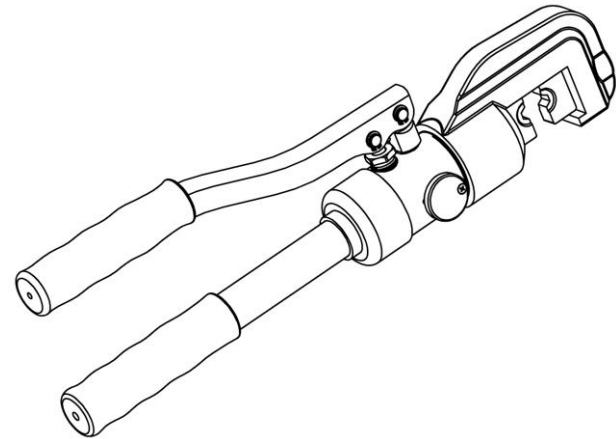
Longitud: 425mm

Origen: China

Crimping range:	Cu 10–120mm ²
Crimping force:	12T
Crimping type:	hexagon crimping
Stroke:	14mm
Length:	approx.425mm
Weight:	approx.4.20kg
Package:	plastic box
Weight of box:	approx.0.81kg
Accessories: crimping dies: 10, 16, 25, 35, 50, 70, 95, 120mm ² Sealing O-ring: one set	

Instruction Manual

Hydraulic Crimping Tool YYQ-120A



Due to continuing improvements, actual product may differ slightly from the product described herein.



Read this material before using this product.

Failure to do so can result in serious injury.

SAVE THIS MANUAL

SAVE THIS MANUAL

Keep this manual for the safety warnings and precautions, assembly, operating, inspection, maintenance and cleaning procedures. Write the month and year of purchase. Keep this manual and the receipt in a safe and dry place for future reference.

IMPORTANT SAFETY INFORMATION

In this manual, on the labeling, and all other information provided with this product:



This is the safety alert symbol. It is used to alert you to potential personal injury hazards. Obey all safety messages that follow this symbol to avoid possible injury or death.

▲ DANGER

DANGER indicates a hazardous situation which, if not avoided, will result in death or serious injury.

▲ WARNING

WARNING indicates a hazardous situation which, if not avoided, could result in death or serious injury.

▲ CAUTION

CAUTION, used with the safety alert symbol, indicates a hazardous situation which, if not avoided, could result in minor or moderate injury.

LIMITED 1 YEAR WARRANTY

We make every effort to assure that its products meet high quality and durability standards, and warrants to the original purchaser that this product is free from defects in materials and workmanship for the period of one year from the date of purchase (90 days if used by a professional contractor or if used as rental equipment). This warranty does not apply to damage due directly or indirectly, to misuse, abuse, negligence or accidents, repairs or alterations outside our facilities, normal wear and tear, or to lack of maintenance. We shall in no event be liable for death, injuries to persons or property, or for incidental, contingent, special or consequential damages arising from the use of our product. Some states do not allow the exclusion or limitation of incidental or consequential damages, so the above limitation of exclusion may not apply to you. THIS WARRANTY IS EXPRESSLY IN LIEU OF ALL OTHER WARRANTIES, EXPRESS OR IMPLIED, INCLUDING THE WARRANTIES OF MERCHANTABILITY AND FITNESS.

To take advantage of this warranty, the product or part must be returned to us with transportation charges prepaid. Proof of purchase date and an explanation of the complaint must accompany the merchandise. If our inspection verifies the defect, we will either repair or replace the product at our election or we may elect to refund the purchase price if we cannot readily and quickly provide you with a replacement. We will return repaired products at our expense, but if we determine there is no defect, or that the defect resulted from causes not within the scope of our warranty, then you must bear the cost of returning the product.

The warranties give you specific legal rights and you may also have other rights which vary from place to place.

PLEASE READ THE FOLLOWING CAREFULLY

THE MANUFACTURER AND/OR DISTRIBUTOR HAS PROVIDED THE PARTS LIST AND ASSEMBLY DIAGRAM IN THIS MANUAL AS A REFERENCE TOOL ONLY. NEITHER THE MANUFACTURER NOR DISTRIBUTOR MAKES ANY REPRESENTATION OR WARRANTY OF ANY KIND TO THE BUYER THAT HE OR SHE IS QUALIFIED TO MAKE ANY REPAIRS TO THE PRODUCT, OR THAT HE OR SHE IS QUALIFIED TO REPLACE ANY PARTS OF THE PRODUCT. IN FACT, THE MANUFACTURER AND/OR DISTRIBUTOR EXPRESSLY STATES THAT ALL REPAIRS AND PARTS REPLACEMENTS SHOULD BE UNDERTAKEN BY CERTIFIED AND LICENSED TECHNICIANS, AND NOT BY THE BUYER. THE BUYER ASSUMES ALL RISK AND LIABILITY ARISING OUT OF HIS OR HER REPAIRS TO THE ORIGINAL PRODUCT OR REPLACEMENT PARTS THERETO, OR ARISING OUT OF HIS OR HER INSTRALLATION OF REPLACEMENT PARTS THERETO.

GENERAL SAFETY RULES

TO WORK IN SAFE CONDITIONS WITH THIS TOOLING, IT IS IMPERATIVE TO READ CAREFULLY THE DIRECTIONS FOR USE AND TO FOLLOW THE INSTRUCTIONS IT CONTAINS. IF YOU DO NOT RESPECT THE INFORMATION WRITTEN IN THAT INSTRUCTION MANUAL THE WARRANTY WILL BE CANCELLED.

1. Work area safety

- a. Keep work area clean and well lit. Cluttered or dark areas invite accidents.
- b. Keep children and bystanders away while operating, distractions will cause you to lose control.

2. Personal safety

- c. Stay alert, watch what you are doing and use common sense when operating the tool. Do not use the tool while you are tired or under the influence of drugs, alcohol or medication.. A moment of inattention while operating hydraulic tools may result in serious personal injury.
- d. Use safety equipment. Always wear eye protection. Safety equipment such as dust mask, non-skid shoes, hard hat, or hearing protection used for appropriate conditions will reduced personal injuries.
- e. Dress properly. Do not wear loose clothing or jewelry. Keep your hair, clothing and gloves away from moving parts. Loose clothes jewelry or long hair can be caught in moving parts.
- f. Do not force the tool. Use the correct power tool for your application .The correct power tool will do the job better and safer at the rate for which it was designed.

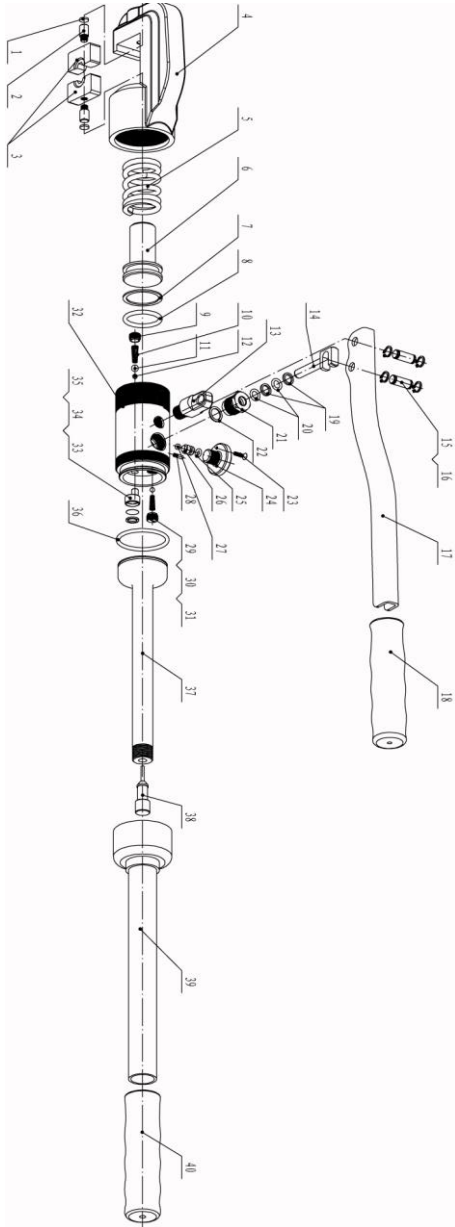
- g. Store idle power tools out of the reach of children and do not allow persons unfamiliar with the hydraulic crimping tool. This tool is dangerous in the hands of untrained users.
- h. Maintain power tools. Check for misalignment or binding of moving parts, breakage of parts and any other condition that may affect the Hydraulic crimping tool operation. If damaged, have the Hydraulic crimping tool repaired before use. Many accidents are caused by poorly maintained power tools.
- i. Use the Hydraulic Crimping Tool, accessories and tool bits etc., in accordance with these instructions and in the manner intended for the particular type of tool, taking into account the working conditions and the work to be performed. Use of the Hydraulic Crimping tool for operations different from those intended could result in a hazardous situation.

3. Service

Have your Hydraulic Crimping Tool serviced by a qualified service technician using only identical replacement parts. This will ensure that the safety of the Hydraulic Crimping Tool Kit is maintained.

No	Description	Qty	No	Description	Qty
1	magnet part	2	21	bolt	1
2	pin	2	22	copper gasket 18x12x1	1
3	die	1 set	23	Bolt M3x10	1
4	head	1	24	screw	1
5	spring	1	25	O-ring 4x2	1
6	piston	1	26	plunger	1
7	plastic retainer ring 35x29x1.2	1	27	steel ball C5	1
8	O-ring 35x3.5	1	28	Pin 3x10	1
9	valve	1	29	valve	1
10	spring	1	30	spring	1
11	steel ball C6	1	31	steel ball C4	1
12	steel ball C4	1	32	cylinder	1
13	stander	1	33	Oil cup	1
14	plunger	1	34	filter sieve 120M	1
15	pin	2	35	plastic retainer ring	1
16	retainer ring	4	36	O-ring 29.8x3.1	1
17	active handle	1	37	oil sac	1
18	handle sleeve	1	38	Plug cock	1
19	plastic retainer ring 13.8x10.6x1.2	2	39	fixed handle	1
20	O-ring 10x2	2	40	handle cover	1

PART LIST



SPECIFIC SAFETY RULES

1. Maintain labels and nameplates on the tool which carry important safety information. If unreadable or missing, contact the agent to replace.
2. This product is not a toy, keep it out of reach of children.
3. Do not slide your fingers in the dies profile.
4. Do not put your fingers in the head of the hydraulic crimping tool when you slide the dies inside it. Your fingers could be pinched very severely.
5. Do not use the tool without die.
6. Do not crimp on live cables or conductors
7. Do only crimp cooper or Al conducting material
8. The warnings, precautions, and instructions discussed in this instruction manual cannot cover all possible conditions and situations that may occur. It must be understood by the operator that common sense and caution are factors which cannot be built into this product, but must be supplied by the operator.



SAVE THESE INSTRUCTION

UNDERSTAND YOUR TOOL

YYQ-120A is a tool for connecting lugs and cable. It carries many advantages of good design, easy operation, high pressure, high efficiency and etc. It is a perfect tool to be used in electrical construction site.

1. Specification

Crimping range:	Cu 10-120mm ²
Crimping force:	60KN
Crimping type:	hexagon crimping
Stroke:	16mm
Hydraulic oil:	15# hydraulic oil
Ambient temperature:	-10°C-40°C
Length:	approx 425mm
Weight:	approx 3.20kg
Package:	plastic box
Weight of box:	approx 0.90kg
Accessories	
crimping die:	10.16.25.35.50.70.95.120 mm ²
sealing O-ring:	one set



The dust or air inside the tool will damage the sealing kit so caused the tool lose function. Make sure the oil is clear and no dust entering into oil when changing oil. Wait for a while and exhaust the oil completely out of the oil tube before inserting the oil plug.

⚠CAUTION

Please wear the rubber gloves to avoid skin touching the oil directly, if touches it in careless, please wash the skin by soap water in timely. In order to protect the environment please drain the waste oil to the treatment center where was approved by government.

Troubleshooting

FAULT	ANALYSIS	SOLUTION
A. No pressure or the pressure is not enough during operation	<ol style="list-style-type: none"> 1. The pump lack oil 2. There is dust exist in oil 3. Inner leakage 	<ol style="list-style-type: none"> 1. Fulfill or replace the oil 2. Change the oil 3. Contact manufacturer or distributor
B. The lug and wire do not connect tightly after crimping.	<ol style="list-style-type: none"> 1. The tool can not reach to the rated pressure 2. Use the wrong die 	<ol style="list-style-type: none"> 1. Refer to the fault A 2. Replace with the right die
C. Generate a lot of burs after crimping	<ol style="list-style-type: none"> 1. Use the wrong die 	<ol style="list-style-type: none"> 1. Replace with the right die
D. Oil leakage on the head or on the ram	<ol style="list-style-type: none"> 1. Sealing kit broken 	<ol style="list-style-type: none"> 1. Contact manufacturer or distributor and replace it by trained person

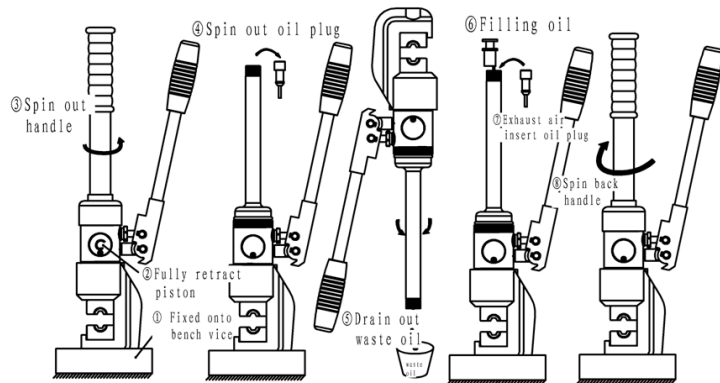
MAINTENANCE AND SERVICING

⚠WARNING

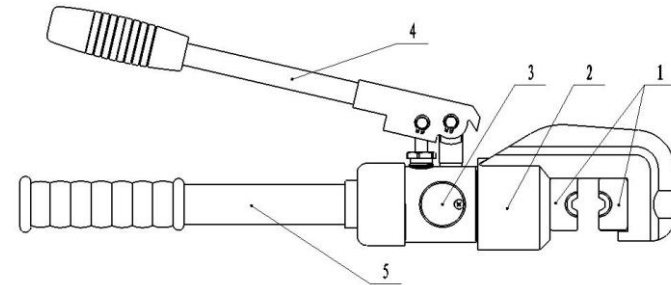
Damaged equipment may cause serious personal injury. Do not use damaged equipment. If abnormal noise or vibration occurs, have the problem corrected before further using.

1. **Before each using**, inspect the general condition of the tool. Check for loose screws, misalignment or binding of moving parts, cracked or broken parts, or any other condition that may affect its safe operation.
2. **After using**, clean external surfaces of the tool with clean, moist, smear the rust preventing oil on the metal surface of the tool and the dies to avoid rusty. Store the tool in the dry environment.
3. Service to the tool should only be done by a qualified Service Technician.
4. In order to prolong the life of the tool please change the oil per year. Make sure the oil filtered by 120 mesh net or over 30µm strainer. Meantime avoid the dusty into the oil cup.
5. After a long time using, the sealing kits will be damaged, if there is leakage please contact with the manufacturer and/or the distributor to change the sealing kits.

How to change oil:



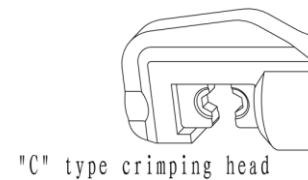
2. Description of the components



Item no.	Description	Function
1	Die	For crimping, interchangeable crimping dies
2	Down die holder	For fixing the down die
3	Screw	For returning piston and releasing pressure
4	Active handle	For operating
5	Fixed handle	For storing oil

3. Function Description

1) "C" type crimping head



2) Release the pressure manually.



OPERATING INSTRUCTIONS

Read the entire **SAFETY INFORMATION** section at the beginning of this manual including all text under subheadings therein before using this product.

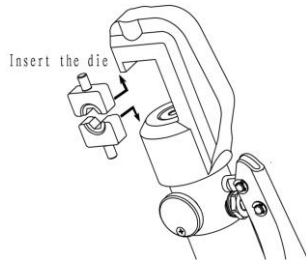
CAUTION

Please do not knock any part of the tool; otherwise it is dangerous for operator.

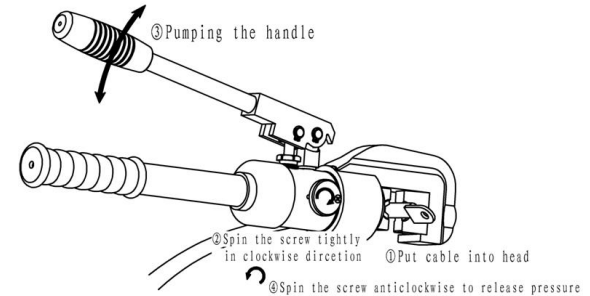
1. Select the appropriate die set. Ask an authorized facility or distributor to choose proper compression die set for the connector and cable being used.

CAUTION Don't operate the tool without dies.

2. Insert the down die, put cable into head, then insert the upper die to make cable between two dies, the tool is ready to operate.



3. Pump the handle until reach to the maximum pressure, then spin the screw to release the pressure manually.



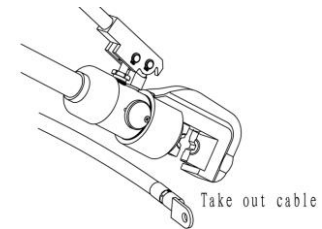
CAUTION

The tool is not insulated, please do not use it on the live conductor to avoid injury occurring.

DANGER

Do not put your fingers into the head of the tool during operating. Your fingers could be pinched very severely.

4. The piston will retract, take out the cable. The tool is ready for its next cycle.



Standard die size: 10.16.25.35.50.70.95.120 mm²



EBCHQ

99330

Ponchadora Hidráulica 12 a 2/0AWG



Tipo de conector: Tubular

Número de Dados: 9

Tipos de Dados: 4,6,8,10, 16, 25, 35, 50, 70mm²

Rango de cable: 12AWG ~ 2/0

AWG(MCM)	DIN
12	4
10	6
9	8
8	10
6	16
4	25
2	35
1/0	50
2/0	70

Rango de engarzado: Cu 4-70 mm

Fuerza de engarzado: 8 toneladas

Tipo de engarzado: Hexagonal

Carrera hexagonal : 10 mm

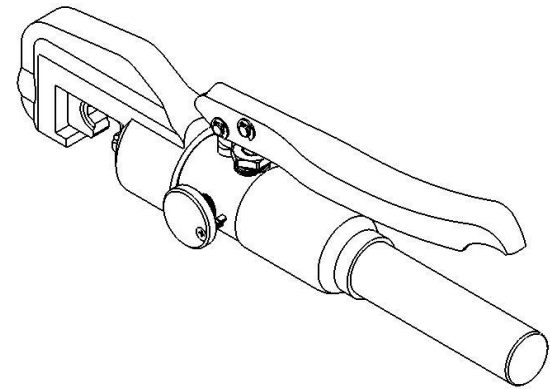
Longitud: ~ 310 mm

Peso : ~ 2.8 kg

Accesorios Dados incluidos: 4, 6, 8, 10, 16, 25,
Caja Plástica

Instruction Manual

Hydraulic Crimping Tool YQK-70



Due to continuing improvements, actual product may differ slightly from the product described herein.



Read this material before using this product.

Failure to do so can result in serious injury.

SAVE THIS MANUAL

SAVE THIS MANUAL

Keep this manual for the safety warnings and precautions, assembly, operating, inspection, maintenance and cleaning procedures. Write the month and year of purchase. Keep this manual and the receipt in a safe and dry place for future reference.

IMPORTANT SAFETY INFORMATION

In this manual, on the labeling, and all other information provided with this product:



This is the safety alert symbol. It is used to alert you to potential personal injury hazards. Obey all safety messages that follow this symbol to avoid possible injury or death.

▲ DANGER

DANGER indicates a hazardous situation which, if not avoided, will result in death or serious injury.

▲ WARNING

WARNING indicates a hazardous situation which, if not avoided, could result in death or serious injury.

▲ CAUTION

CAUTION, used with the safety alert symbol, indicates a hazardous situation which, if not avoided, could result in minor or moderate injury.

LIMITED 1 YEAR WARRANTY

We make every effort to assure that its products meet high quality and durability standards, and warrants to the original purchaser that this product is free from defects in materials and workmanship for the period of one year from the date of purchase (90 days if used by a professional contractor or if used as rental equipment). This warranty does not apply to damage due directly or indirectly, to misuse, abuse, negligence or accidents, repairs or alterations outside our facilities, normal wear and tear, or to lack of maintenance. We shall in no event be liable for death, injuries to persons or property, or for incidental, contingent, special or consequential damages arising from the use of our product. Some states do not allow the exclusion or limitation of incidental or consequential damages, so the above limitation of exclusion may not apply to you. **THIS WARRANTY IS EXPRESSLY IN LIEU OF ALL OTHER WARRANTIES, EXPRESS OR IMPLIED, INCLUDING THE WARRANTIES OF MERCHANTABILITY AND FITNESS.**

To take advantage of this warranty, the product or part must be returned to us with transportation charges prepaid. Proof of purchase date and an explanation of the complaint must accompany the merchandise. If our inspection verifies the defect, we will either repair or replace the product at our election or we may elect to refund the purchase price if we cannot readily and quickly provide you with a replacement. We will return repaired products at our expense, but if we determine there is no defect, or that the defect resulted from causes not within the scope of our warranty, then you must bear the cost of returning the product.

The warranties give you specific legal rights and you may also have other rights which vary from place to place.

PLEASE READ THE FOLLOWING CAREFULLY

THE MANUFACTURER AND/OR DISTRIBUTOR HAS PROVIDED THE PARTS LIST AND ASSEMBLY DIAGRAM IN THIS MANUAL AS A REFERENCE TOOL ONLY. NEITHER THE MANUFACTURER NOR DISTRIBUTOR MAKES ANY REPRESENTATION OR WARRANTY OF ANY KIND TO THE BUYER THAT HE OR SHE IS QUALIFIED TO MAKE ANY REPAIRS TO THE PRODUCT, OR THAT HE OR SHE IS QUALIFIED TO REPLACE ANY PARTS OF THE PRODUCT. IN FACT, THE MANUFACTURER AND/OR DISTRIBUTOR EXPRESSLY STATES THAT ALL REPAIRS AND PARTS REPLACEMENTS SHOULD BE UNDERTAKEN BY CERTIFIED AND LICENSED TECHNICIANS, AND NOT BY THE BUYER. THE BUYER ASSUMES ALL RISK AND LIABILITY ARISING OUT OF HIS OR HER REPAIRS TO THE ORIGINAL PRODUCT OR REPLACEMENT PARTS THERETO, OR ARISING OUT OF HIS OR HER INSTALLATION OF REPLACEMENT PARTS THERETO.

GENERAL SAFETY RULES

TO WORK IN SAFE CONDITIONS WITH THIS TOOLING, IT IS IMPERATIVE TO READ CAREFULLY THE DIRECTIONS FOR USE AND TO FOLLOW THE INSTRUCTIONS IT CONTAINS. IF YOU DO NOT RESPECT THE INFORMATION WRITTEN IN THAT INSTRUCTION MANUAL THE WARRANTY WILL BE CANCELLED.

1. Work area safety

- a. Keep work area clean and well lit. Cluttered or dark areas invite accidents.
- b. Keep children and bystanders away while operating, distractions will cause you to lose control.

2. Personal safety

- c. Stay alert, watch what you are doing and use common sense when operating the tool. Do not use the tool while you are tired or under the influence of drugs, alcohol or medication.. A moment of inattention while operating hydraulic tools may result in serious personal injury.
- d. Use safety equipment. Always wear eye protection. Safety equipment such as dust mask, non-skid shoes, hard hat, or hearing protection used for appropriate conditions will reduced personal injuries.
- e. Dress properly. Do not wear loose clothing or jewelry. Keep your hair, clothing and gloves away from moving parts. Loose clothes jewelry or long hair can be caught in moving parts.
- f. Do not force the tool. Use the correct power tool for your application .The correct power tool will do the job better and safer at the rate for which it was designed.

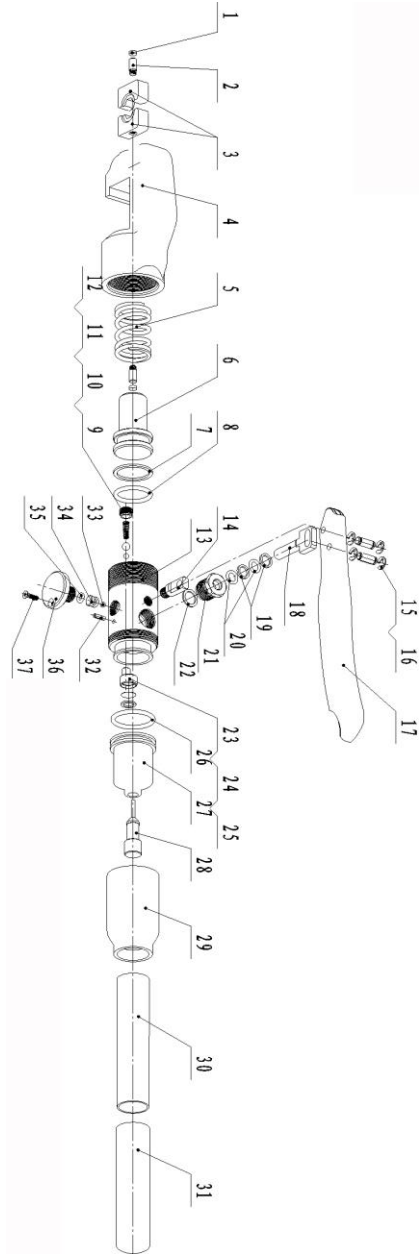
- g. Store idle power tools out of the reach of children and do not allow persons unfamiliar with the hydraulic crimping tool. This tool is dangerous in the hands of untrained users.
- h. Maintain power tools. Check for misalignment or binding of moving parts, breakage of parts and any other condition that may affect the Hydraulic crimping tool operation. If damaged, have the Hydraulic crimping tool repaired before use. Many accidents are caused by poorly maintained power tools.
- i. Use the Hydraulic Crimping Tool, accessories and tool bits etc., in accordance with these instructions and in the manner intended for the particular type of tool, taking into account the working conditions and the work to be performed. Use of the Hydraulic Crimping tool for operations different from those intended could result in a hazardous situation.

3. Service

Have your Hydraulic Crimping Tool serviced by a qualified service technician using only identical replacement parts. This will ensure that the safety of the Hydraulic Crimping Tool Kit is maintained.

No	Description	Qty	No	Description	Qty
1	magnet part	2	20	O-ring	2
2	pin	2	21	bolt	1
3	die	1 set	22	copper gasket	1
4	head	1	23	fliter	1
5	spring	1	24	fliter sieve	1
6	piston	1	25	plastic retainer ring	1
7	plastic retainer ring	1	26	O-ring	1
8	O-ring	1	27	oil tube	1
9	valve	1	28	faucet	1
10	spring	1	29	housing	1
11	steel ball	1	30	fixed handle	1
12	steel ball	1	31	handle sleeve	1
13	cylinder	1	32	pin	1
14	stander	1	33	steel ball	1
15	pin	2	34	plunger	1
16	retainer ring	4	35	O-ring	1
17	active handle	1	36	screw	1
18	plunger	1	37	bolt	1
19	retainer ring	2	38		1

PART LIST



SPECIFIC SAFETY RULES

1. Maintain labels and nameplates on the tool which carry important safety information. If unreadable or missing, contact the agent to replace.
2. This product is not a toy, keep it out of reach of children.
3. Do not slide your fingers in the dies profile.
4. Do not put your fingers in the head of the hydraulic crimping tool when you slide the dies inside it. Your fingers could be pinched very severely.
5. Do not use the tool without die.
6. Do not crimp on live cables or conductors
7. Do only crimp cooper or Al conducting material
8. The warnings, precautions, and instructions discussed in this instruction manual cannot cover all possible conditions and situations that may occur. It must be understood by the operator that common sense and caution are factors which cannot be built into this product, but must be supplied by the operator.



SAVE THESE INSTRUCTION

UNDERSTAND YOUR TOOL

YQK-70 is a tool for connecting lugs and cable. It carries many advantages of good design, easy operation, high pressure, high efficiency and etc. It is a perfect tool to be used in electrical construction site.

1. Specification

Crimping range:	Cu 4-70mm ²
Crimping force:	45KN
Crimping type:	hexagon crimping
Stroke:	14mm
Hydraulic oil:	T 15#
Working temperature:	-20°C-40°C
Length:	approx 310mm
Weight:	approx 1.80kg
Package:	plastic box
Weight of box:	approx 0.77kg
Accessories	
crimping die:	4, 6, 8, 10, 16, 25, 35, 50, 70 mm ²
sealing O-ring:	one set



The dust or air inside the tool will damage the sealing kit so caused the tool lose function. Make sure the oil is clear and no dust entering into oil when changing oil. Wait for a while and exhaust the oil completely out of the oil tube before inserting the oil plug.

⚠CAUTION

Please wear the rubber gloves to avoid skin touching the oil directly, if touches it in careless, please wash the skin by soap water in timely. In order to protect the environment please drain the waste oil to the treatment center where was approved by government.

Troubleshooting

FAULT	ANALYSIS	SOLUTION
A. No pressure or the pressure is not enough during operation	<ol style="list-style-type: none">1. The pump lack oil2. There is dust exist in oil3. Inner leakage	<ol style="list-style-type: none">1. Fulfill or replace the oil Change the oil2. Contact manufacturer or distributor
B. The lug and wire do not connect tightly after crimping.	<ol style="list-style-type: none">1. The tool can not reach to the rated pressure2. Use the wrong die	<ol style="list-style-type: none">1. Refer to the fault A2. Replace with the right die
C. Generate a lot of burs after crimping	<ol style="list-style-type: none">1. Use the wrong die	<ol style="list-style-type: none">1. Replace with the right die
D. Oil leakage on the head or on the ram	<ol style="list-style-type: none">1. Sealing kit broken	<ol style="list-style-type: none">1. Contact manufacturer or distributor and replace it by trained person

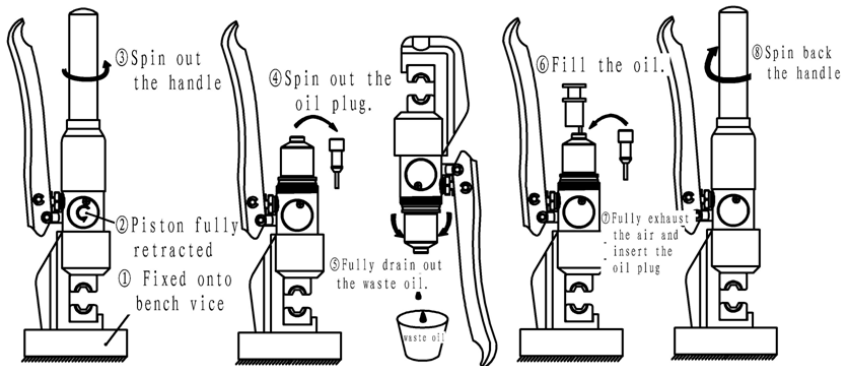
MAINTENANCE AND SERVICING

⚠WARNING

Damaged equipment may cause serious personal injury. Do not use damaged equipment. If abnormal noise or vibration occurs, have the problem corrected before further using.

1. **Before each using**, inspect the general condition of the tool. Check for loose screws, misalignment or binding of moving parts, cracked or broken parts, or any other condition that may affect its safe operation.
2. **After using**, clean external surfaces of the tool with clean, moist, smear the rust preventing oil on the metal surface of the tool and the dies to avoid rusty. Store the tool in the dry environment.
3. Service to the tool should only be done by a qualified Service Technician.
4. In order to prolong the life of the tool please change the oil per year. Make sure the oil filtered by 120 mesh net or over 30µm strainer. Meantime avoid the dusty into the oil cup.
5. After a long time using, the sealing kits will be damaged, if there is leakage please contact with the manufacturer and/or the distributor to change the sealing kits.

How to change the oil:



2. Description of the components

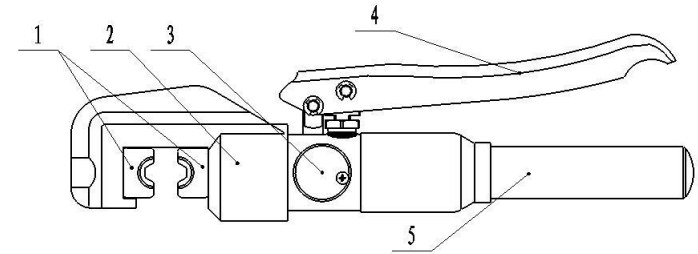
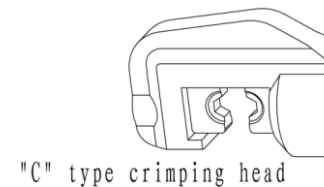


Table 1

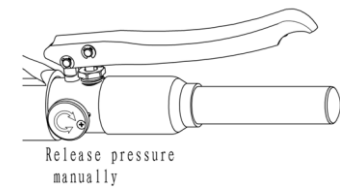
Item no.	Description	Function
1	Die	For crimping, interchangeable crimping dies
2	Down die holder	For fixing the down die
3	Screw	For returning piston and releasing pressure
4	Active handle	For operating
5	Fixed handle	For storing oil

3. Function Description

1) "C" type crimping head



2) Release the pressure manually.



OPERATING INSTRUCTIONS

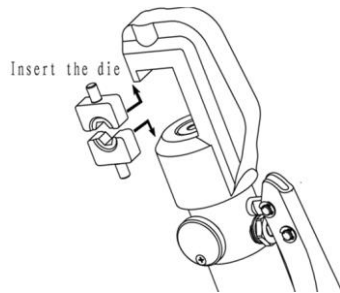
Read the entire **SAFETY INFORMATION** section at the beginning of this manual including all text under subheadings therein before using this product.

CAUTION Please do not knock any part of the tool, otherwise it is dangerous for operator.

1. Select the appropriate die set. Ask an authorized facility or distributor to choose proper compression die set for the connector and cable being used.

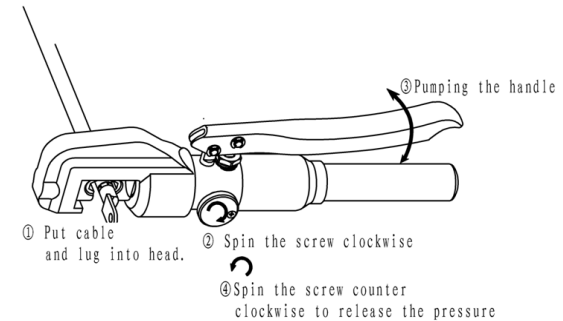
CAUTION Don't operate the tool without dies.

2. Insert the upper crimping die and the down crimping die to match the die holder when both die halves are in place.
3. Make sure both dies halves are secured before operating the tool.



4. Fully insert the cable into the barrel of the connector.
5. Place the connector between the dies, Pump the handle until reach to the maximum pressure, then spin the screw to release the pressure manually.

6. The piston will retract, take out the connector, the tool is ready for its next cycle.

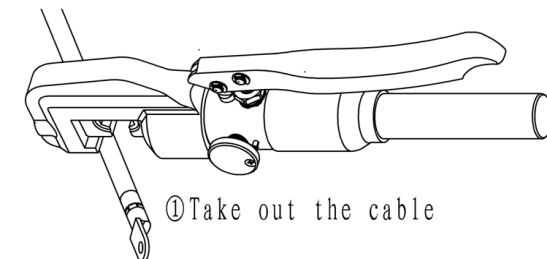


CAUTION

The tool is not insulated, please do not use it on the live conductor to avoid injury occurring.

DANGER

Do not put your fingers into the head of the tool during operating. Your fingers could be pinched very severely.



CRIMPERS

■ Model No. UC-6

Length : 627 mm
Weight : 6.0 kgs

■ Specifications:

Max. Pressure : 700 bar
Oil Required : 27 cc
Max. Output : 7.03 tons / 62.5 kN
Jaw Opening : 36 mm
Max. Crimping Capacity : up to 32 mm outer diameter connector (UC-6)

■ Features:

- Light weight, compact and slim design.
- Pressure relief valve for overload protection.
- Automatic low/high-pressure conversion with rapid/slow operating motion.
- 360° rotating head for convenient operation.
- Two-stage hydraulic system reduces the number of pumps required.
- Dieless compression to crimp Anderson style connectors up to 500 MCM.

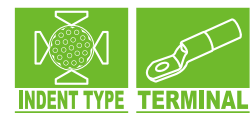
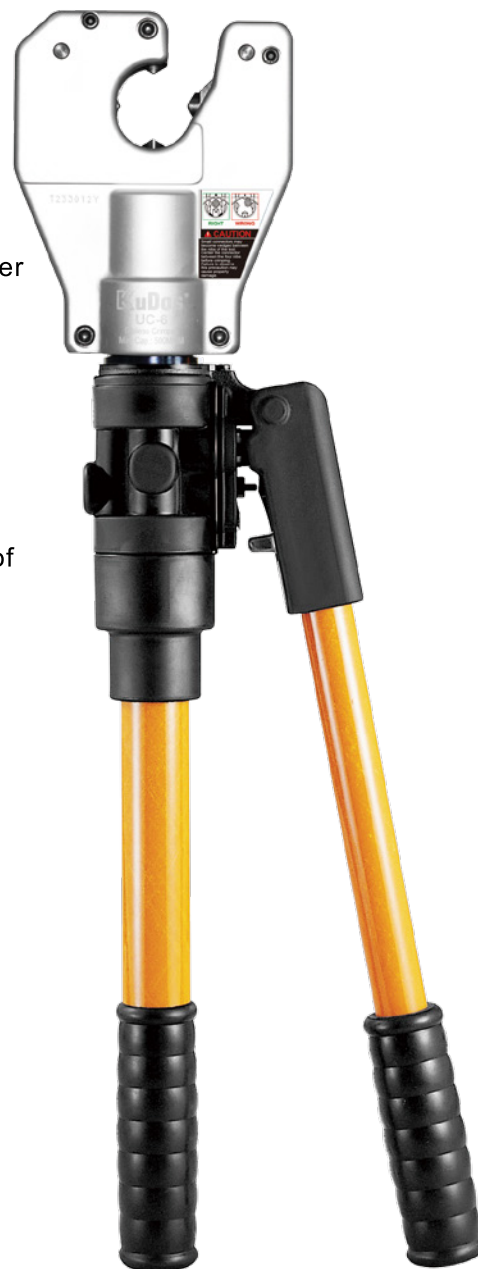
■ Accessories:

Plastic carrying case
(See page 220)

- (L) 645 mm x (W) 128 mm x (H) 303 mm

Use for

- UC-6
- UC-6FT



■ Model No. **UC-6FT**

Length : 580 mm

Weight : 6.4 kgs

■ Specifications:

Max. Pressure : 700 bar
 Oil Required : 27 cc
 Max. Output : 7.03 tons / 62.5 kN
 Jaw Opening : 38 mm
 Max. Crimping Capacity : up to 36 mm outer diameter connector (UC-6FT)

■ Features:

- Light weight, compact and slim design.
- Pressure relief valve for overload protection.
- Automatic low/high-pressure conversion with rapid/slow operating motion.
- 360° rotating head for convenient operation.
- Two-stage hydraulic system reduces the number of pumps required.
- Dieless compression to crimp Anderson style connectors up to 750 MCM.

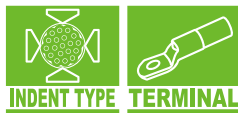
■ Accessories:

Plastic carrying case
 (See page 220)

- (L) 645 mm x (W) 128 mm x (H) 303 mm

Use for

- UC-6
- UC-6FT



■ Model No. **HH-400**

Length: 559 mm

Weight: 5.8 kgs

■ Specifications:

Max. Pressure : 700 bar

Oil Required : 57 cc

Max. Output : 15.82 tons / 140.7 kN

■ Features:

- Light weight, compact and slim design.
- Single stage pumping for rapid ram advance.
- Relief valve.
- Head rotates through 180° degree for difficult working environment.

■ Accessories:

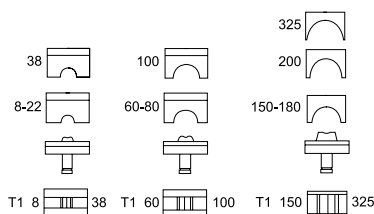
Plastic carrying case

- Crimping tope only without any die set.
- Dies sold separately



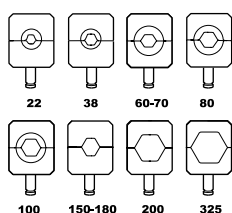
■ Model No. **HH-400I**

- For solderless terminal 8~325 mm²
- With Support Die 8-22, 38, 60-80, 100, 150-180, 200 and 325 mm²
- With Indent Die 8-38, 60-100 and 150-325 mm² Dies



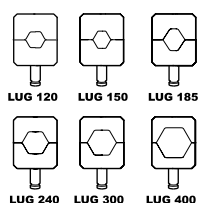
■ Model No. **HH-400X**

- With 8 of hexagonal die set for solderless terminal 22~325 mm²
- Die set : 22, 38, 60-70, 80, 100, 150-180, 200, 325



■ Model No. **HH-400XL**

- With 6 of hexagonal die set for cable lug 120 to 400 mm²
- Die set : LUG120, LUG150, LUG185, LUG240, LUG300, LUG400



※ Crimping without die sets is prohibited.

mm ²	AWG (MCM)	JIS	DIN
8.3	8	8	10
13.30	6	14	16
16.78	5		
21.09	4	22	25
26.57	3		
33.94	2	38	35
42.22	1		
53.52	1/0	60	50
67.51	2/0		70
85.16	3/0	80	95
107.22	4/0	100	
126.68	250 MCM	125	120
152.01	300	150	150
177.38	350		185
202.68	400	200	240
253.35	500	250	
304.02	600	325	300
354.69	700		
380.03	750		
405.36	800	400	400
456.03	900		
506.70	1000	500	500

USER'S MANUAL

HAND HYDRAULIC
COMPRESSION TOOL

HH-400 X

With 8 of hexagonal die set for
sloderless terminal 22~325mm²
Die set : 22,38,60-70,80,100,
150-180,200,325



KuDos®

CONTENTS:

SIZE: 1

PARTS LIST: 2

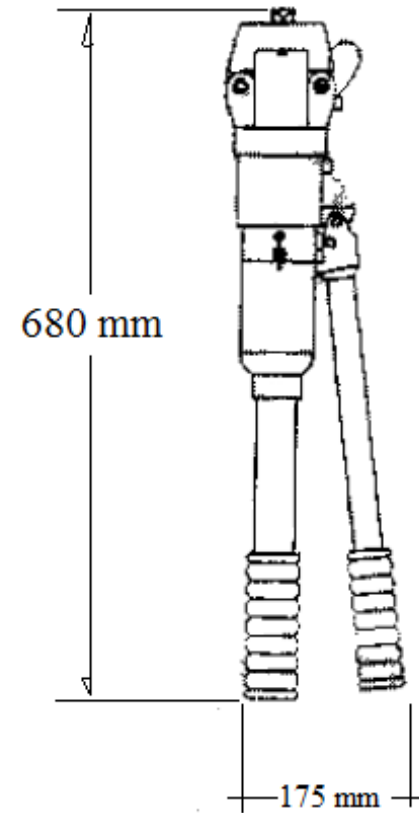
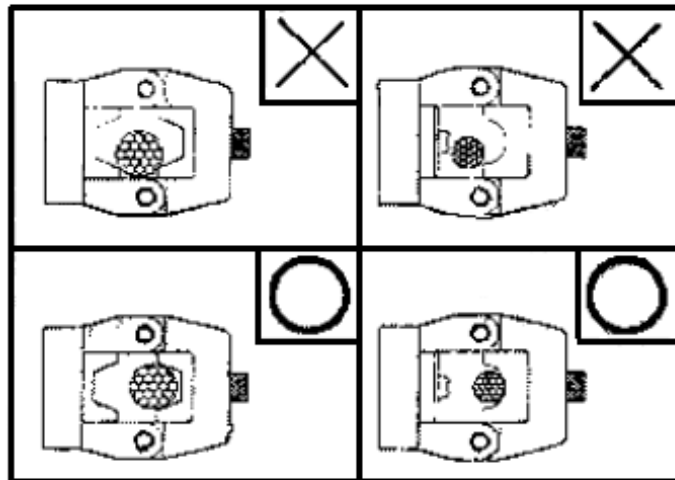
OPERATION INSTRUCTION: 4

REFILL OIL: 6

SPECIAL OPERATION FOR HH-400 I: 8

**** NOTICE ****

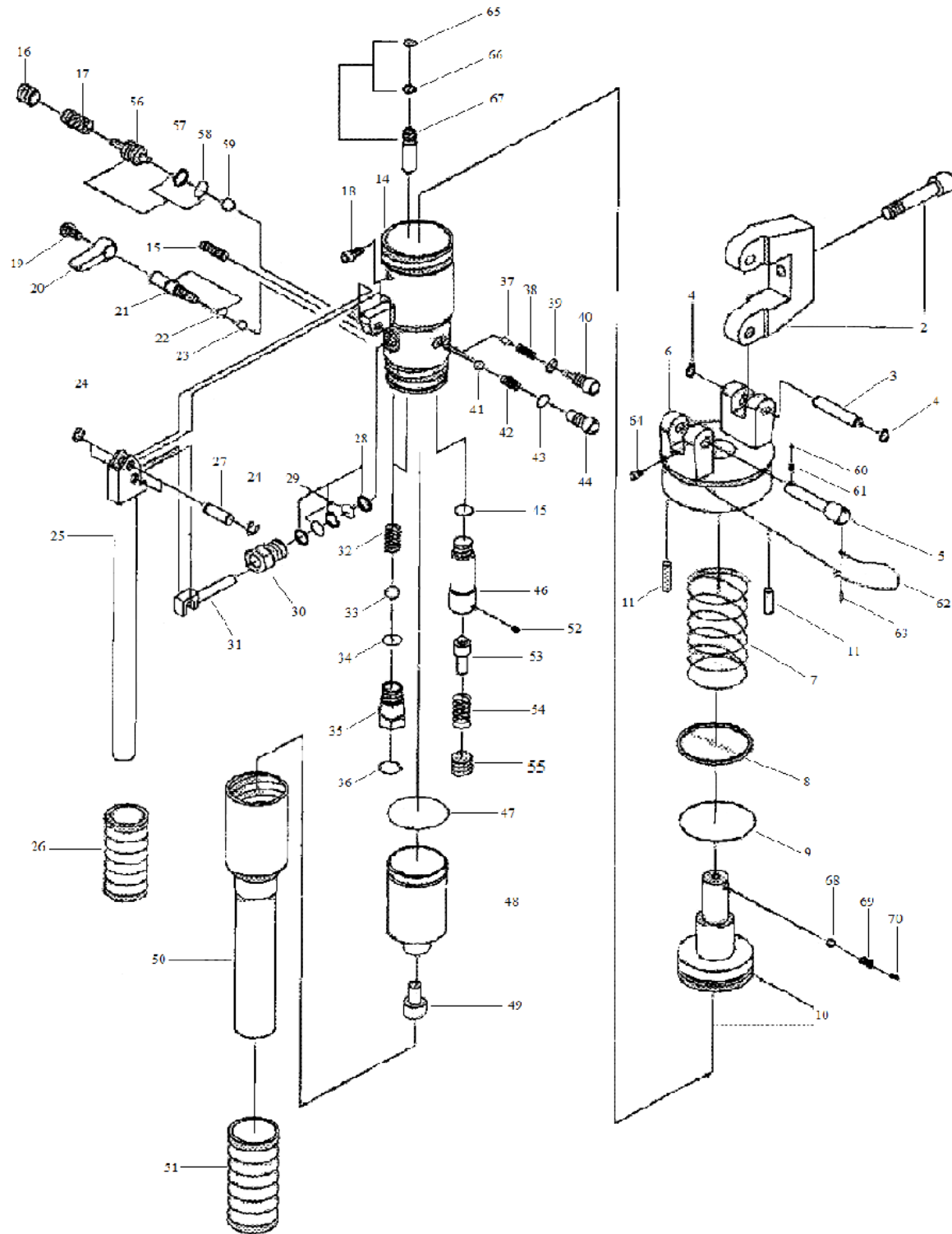
These two incorrect conditions will damage the tool



WEIGHT: 7 Kgs

HH-400 X

1	SCREW	38	SPRING
2	UPPER HEAD	39	O-RING
3	PIN	40	SCREW
4	CIRCRIP	41	BALL
5	FIXING PIN	42	SPRING
6	HEAD FUSE	43	O-RING
7	MAIN SPRING	44	SCREW
8	BACK-UP RING	45	O-RING
9	O-RING	46	VALVE SCREW
10	PISTON	47	O-RING
11	PIN	48	RESERVOIR
14	CYLINDER	49	RESERVOIR CAP
15	SCREW	50	BODY HANDLE
16	SCREW	51	BODY HANDLE GRIP
17	SPRING	52	SCREW
18	SCREW	53	PIN
19	SCREW	54	SPRING
20	SWITCH	55	SCREW
21	SCREW	56	CONTROLLER
22	O-RING	57	BACK-UP RING
23	BALL	58	O-RING
24	CIRCRIP	59	BALL
25	PUMP HANDLE	60	BALL
26	PUMP HANDLE GRIP	61	SPRING
27	PIN	62	WIRE
28	BACK-UP RING	63	PIN
29	O-RING	64	SCREW
30	SCREW	65	O-RING
31	PUMP PISTON	66	BACK-UP RING
32	SPRING	67	SCREW
33	BALL	68	SCREW
34	O-RING	69	SPRING
35	SCREW	70	BALL
36	FILTER		
37	BALL		



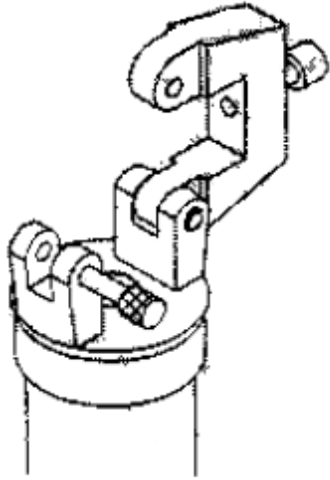
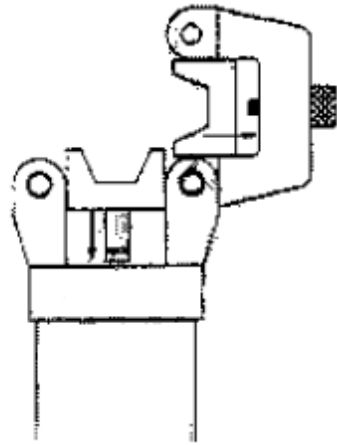


Fig. 1-1



* see page 6
Special Operation
for HH 400I
Fig. 1-2

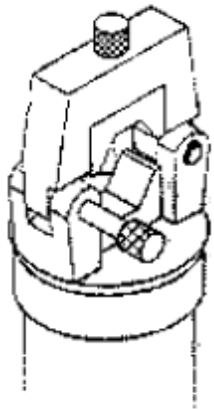


fig.1-3

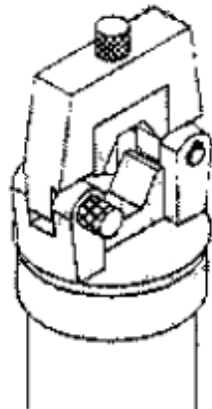


fig.1-4

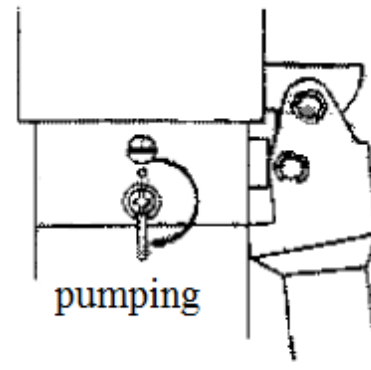


fig. 1-5

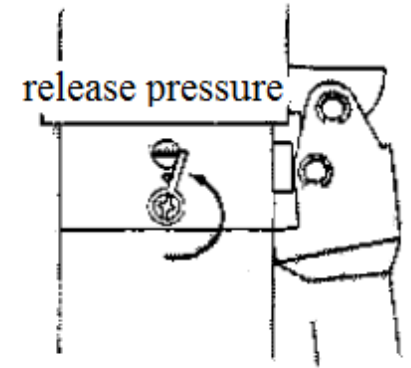
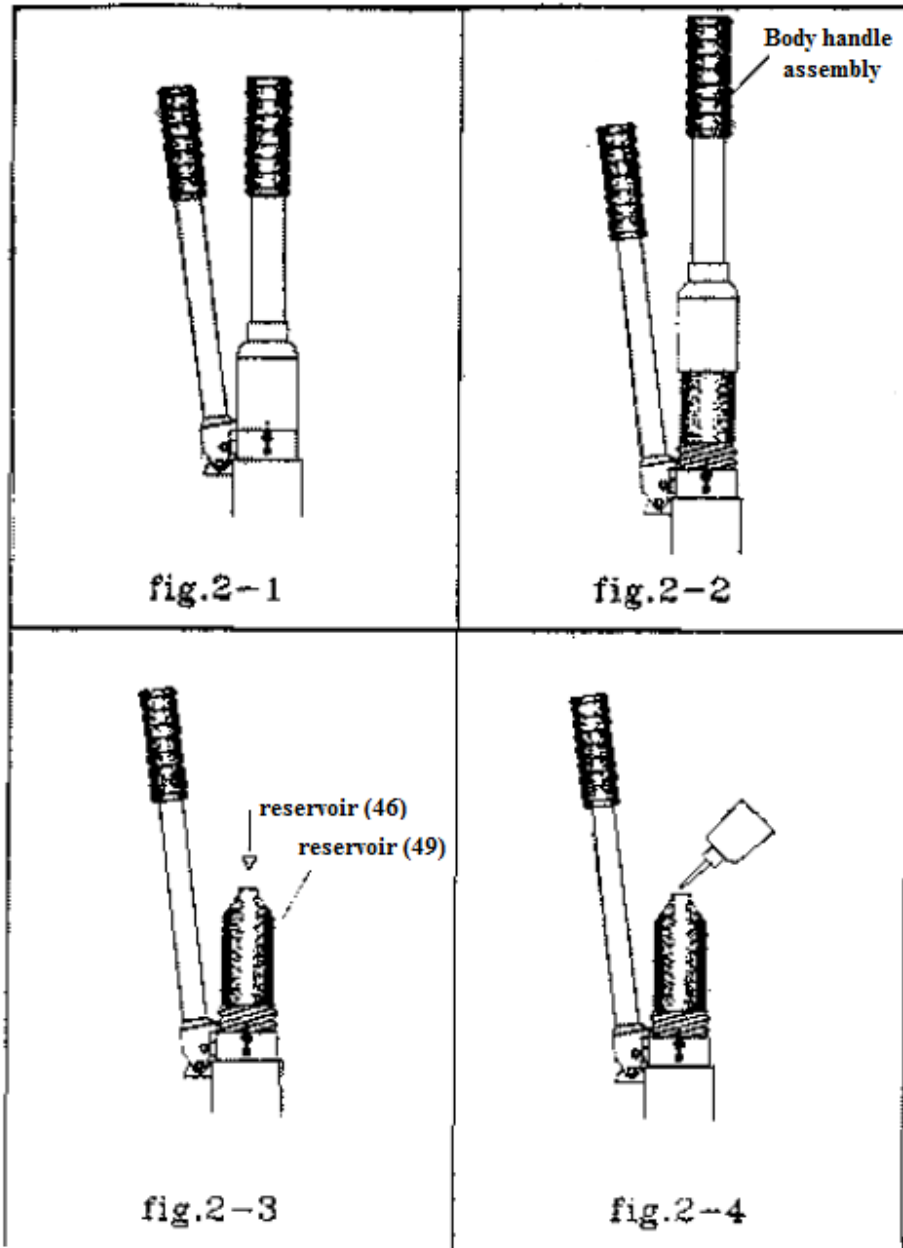


fig. 1-6

OPERATING INSTRUCTIONS

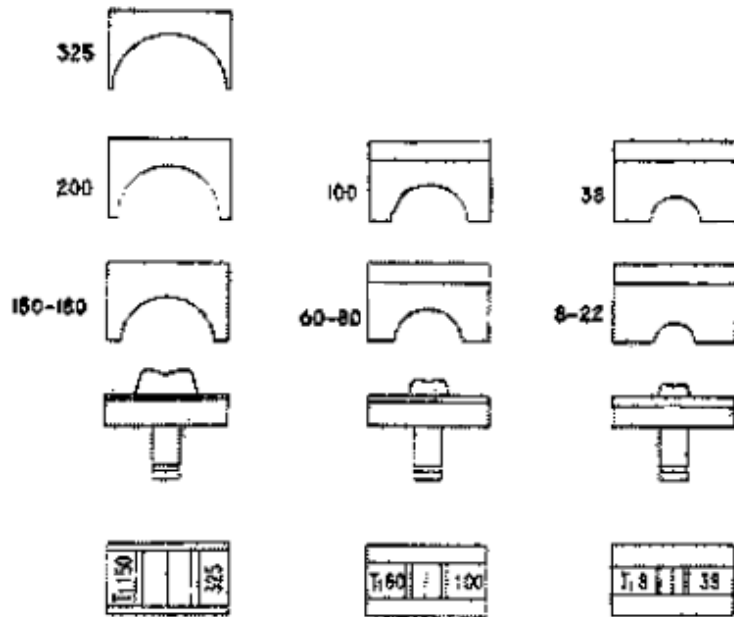
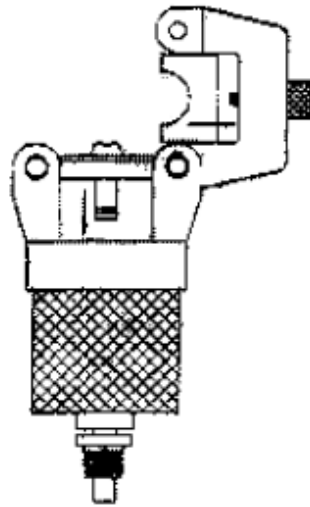
1. Open the upper head (2) (Fig. 1-1)
2. Insert dies (Fig. 1-2)
3. Close upper head and insert fixing pin (5) all the way. (fig. 1-3, fig. 1-4)
CAUTION: IF FIXING PIN DOES NOT INSERT ALL THE WAY, HEAD MAY BE DAMAGED DURING OPERATION.
4. Turn release pressure switch (20) to pumping position (down) and pumping the pump handle until the die close (fig. 1-5)
5. If strong force is needed during compressing object, turning adjusted screw counter-clockwise a circle or more.
6. After operation, turn release pressure switch to release pressure position (up), (fig. 1-6)



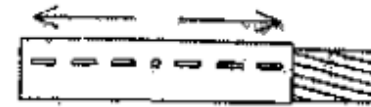
REFILL OIL

1. Place the tool head downward and hold it an upright position (fig. 2-1)
2. Release pressure.
3. Remove the body handle assembly (50, 51). (fig. 2-2)
4. Pump the handle several times and release pressure. Repeat this procedure several times. This will clear any air bubbles in the hydraulic system.
5. Holding the pump handle in the close position, remove the reservoir cap (49) with care as air bubbles may remain in the end of the oil reservoir (fig. 2-3)
6. Refill oil (Shell Tellus oil T15, Mobile DET-12, or equal) and reset the cap. (fig. 2-4)
7. Check the oil reservoir for pin holes by squeezing reservoir with fingers. If any leaks are detected, replace with a new reservoir.

**SPECIAL OPERATION
FOR HH-400 I**

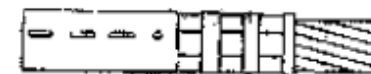


MOUNTING INSTRUCTION



First compression (inside)

First compression (inside)



Finish compression
form inside to outside

Finish compression
form inside to outside



First compression
on the other side



First compression
from inside to outside

99404 UB-412 (HYCP-400)

KuDos[®]
Your Forever Working Partner.



■ Model No. UB-412 (HYCP-400)

Length: 590 (L)mm

Weight: 7.0 kgs

■ Specifications:

Max. Pressure: 700 bar

Oil Required: 145 cc

Max Output: 12 ton

Jaw Opening: 32mm

Two stage pump action

■ Crimping Capacity:

- Max. Compression: 400 mm² copper lugs
- Accepts all dies used for Alcoa, Burndy, T&B, Klauke, Cembre and Blackburn 12-ton compressors
- Dies sold separately (See page 47)
(CU 16/25/35/50/70/95/120/150/185/240/300/400)

■ Features:

- Fiberglass handles are durable and light weight .
- Pressure relief valve for overload protection.
- Automatic low/high-pressure conversion with rapid/slow operating motion.
- 180° rotating head for convenient operation.
- External adjustable relief valve.
- Two-stage hydraulic system reduces the number of pumps necessary.

■ Accessories:

KuDos plastic carrying case (See page 80)



Safety Operating & Maintenance Instructions

Hydraulic Hand Compression Crimper

UB-412



Version: 2006/07

KuDos® Hydraulic Hand Compression Crimpers comply with ISO 9001:2000. We guarantee our qualities and services.

ATTENTION!

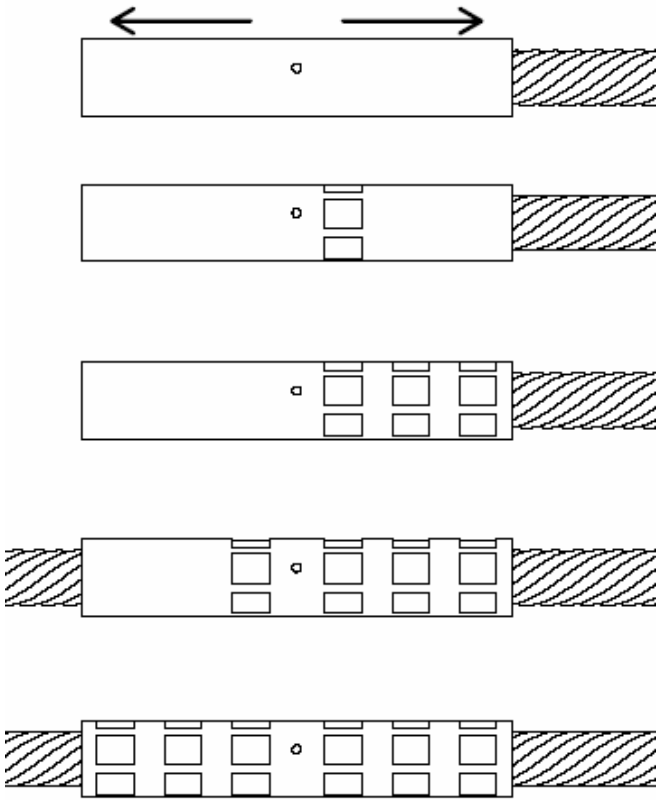
Safety Operating & Maintenance Instructions must be followed.

Table of Contents

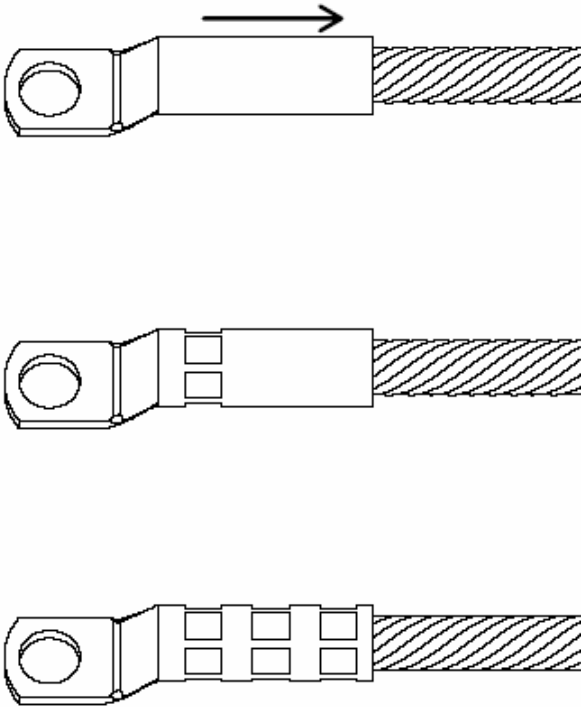
◆ Table of Contents	1
◆ Safety Instructions	2
◆ Product Description	3
◆ Characters & Functions	4
◆ Operation Manual	5
◆ Trouble – Shooting	8
◆ Maintenance	9
◆ Limited Warranty	10
◆ Diagram of Parts & Components	11
◆ Table of Parts & Components	12
◆ Dies	13
◆ Operation Instructions	14
◆ Manufacture & Quality Certificate	

Operation Instructions

- Direction of Compression :
Single-sided / Outward

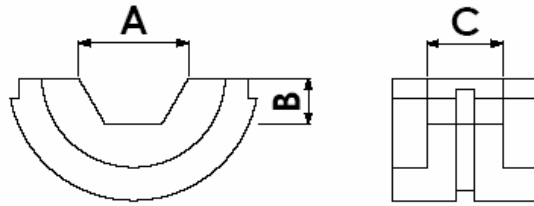


- Direction of Compression :
Outward



Dies

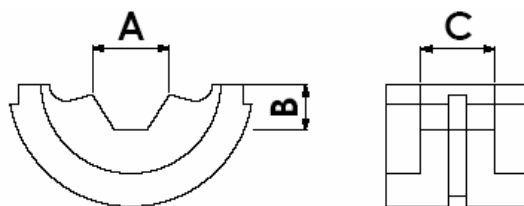
Hex Dies (For Copper Lugs)



Unit: mm

Die No.	A	B	C
CU-16	7.20	3.12	14.00
CU-25	8.43	3.67	14.00
CU-35	10.00	4.33	16.00
CU-50	11.60	5.02	16.00
CU-70	13.70	5.95	15.60
CU-95	15.90	6.85	15.70
CU-120	17.98	7.79	16.00
CU-150	20.10	8.70	15.00
CU-185	22.33	9.67	14.00
CU-240	25.43	11.01	13.00
CU-300	28.44	12.32	11.20
CU-400	30.00	14.55	11.50

Hex Dies (For Solderless Terminals)



Unit: mm

Die No.	A	B	C
CU-8-14	7.40	3.50	8.00
CU-22	8.80	4.30	10.00
CU-38	11.50	5.40	11.50
CU-60-70	13.40	6.00	15.00
CU-80	15.00	6.75	18.00
CU-100	18.00	8.00	15.00
CU-150-180	21.00	9.10	13.00
CU-200	28.44	12.32	11.20
CU-325	30.00	14.56	11.50

Thank you for using **KuDos** products. This handbook must be read carefully prior to operating the product. Special attentions should be paid to the section "Safety Instructions". Damages and injuries caused by improper uses of the product are **NOT** included in our warranty. We would like to remind you to work safely and keep this handbook on hand.

Safety Instructions

- Follow instructions to assure safety.

WARNING	
	Keep hands off the compression section while operating the product.
	This product is NOT an insulator. Proper equipments should be used to avoid electric shock.
ATTENTION	
	Goggles are recommended during operation of the product.
	Safety Operating & Maintenance Instructions must be read carefully prior to operating the product.

Product Description

■ Subassemblies

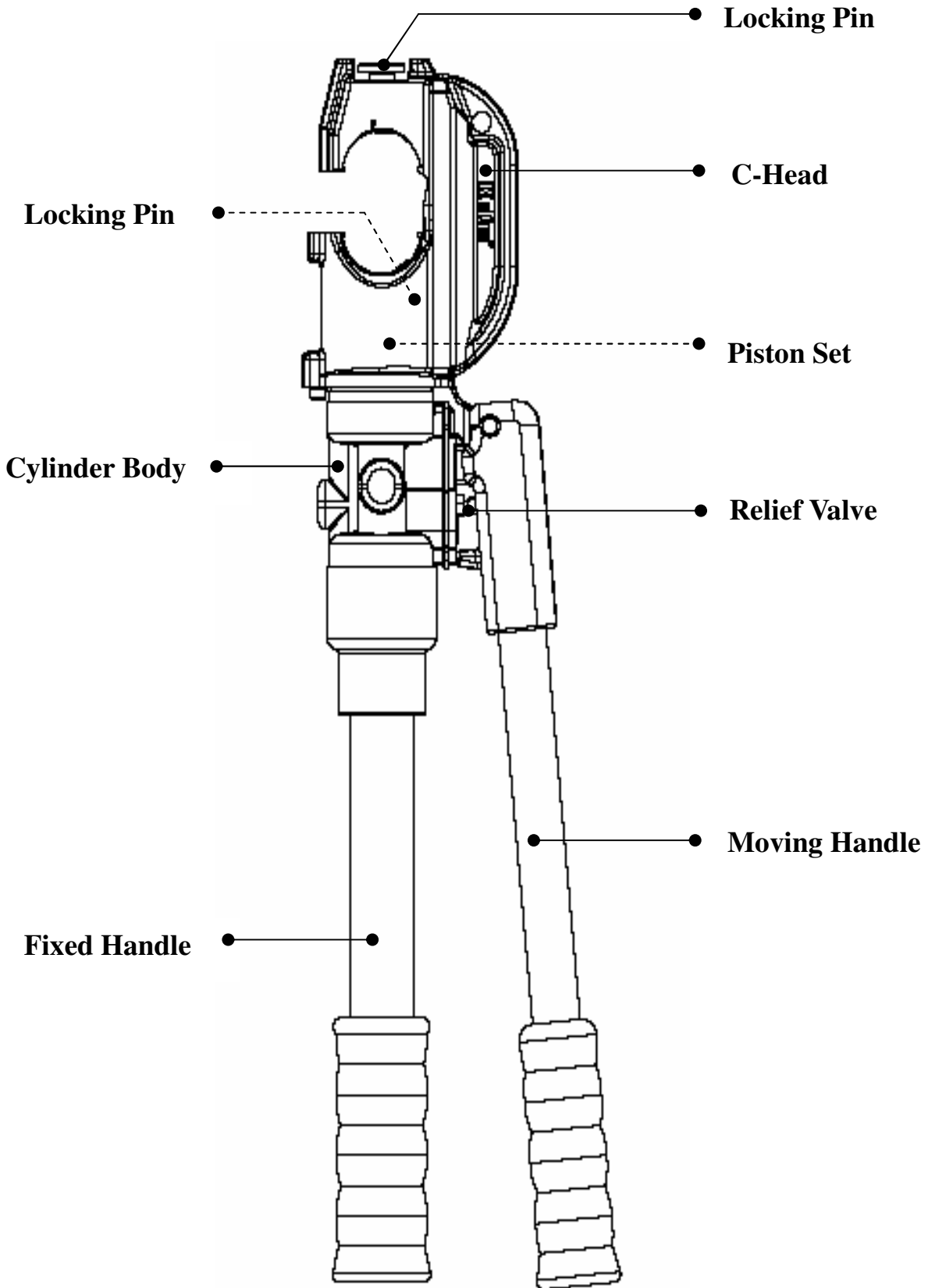
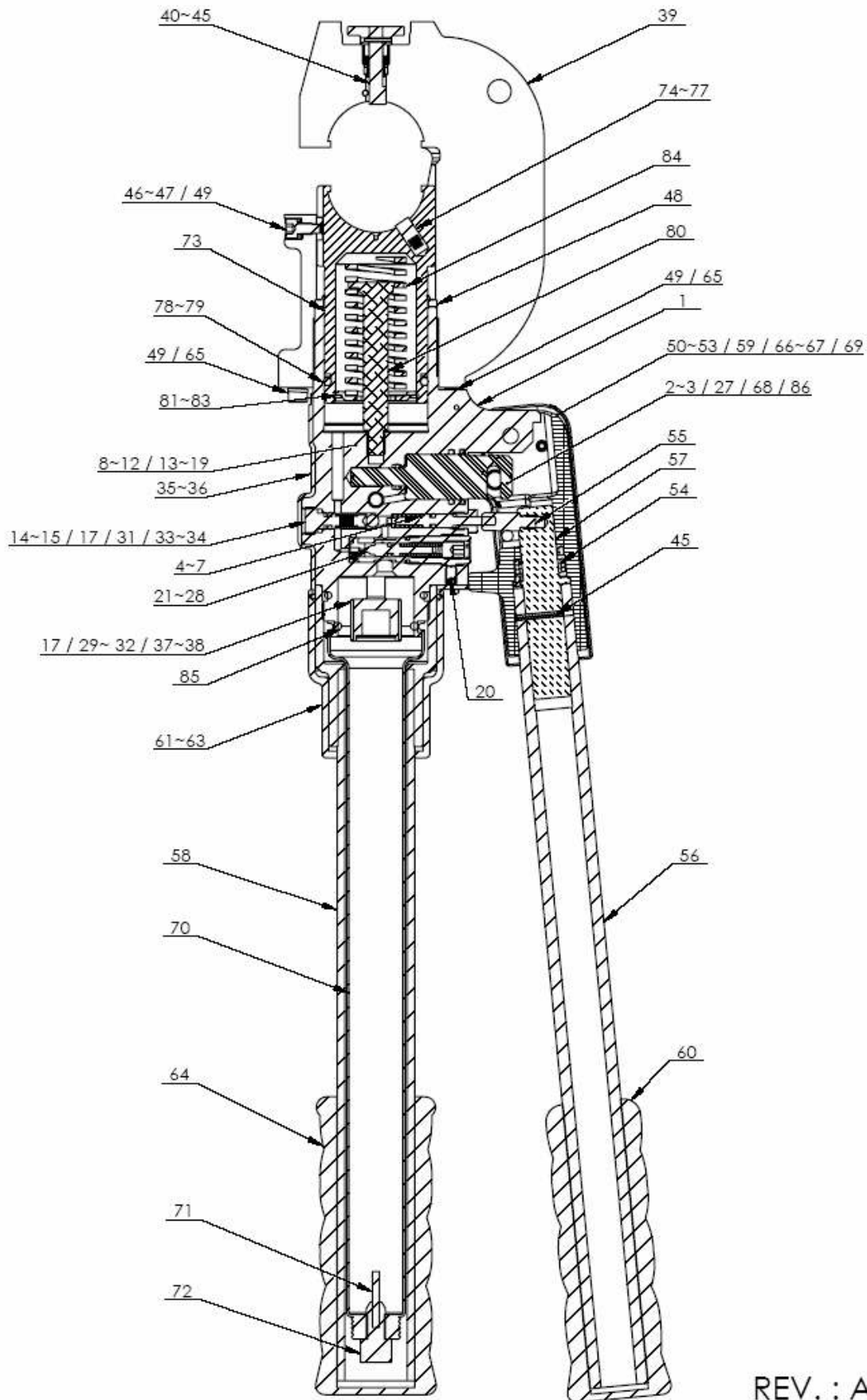


Table of Parts & Components

No.	Q'ty	Part	No.	Q'ty	Part
1	1	Cylinder Body	44	1	Arresting Pin
2	1	Dust Seal	45	2	Spring Pin
3	1	O-Ring	46	1	Socket Head Cap Screw
4	1	Locating Screw	47	1	Guide Block
5	1	Release Lever	48	1	Dust Seal
6	1	O-Ring	49	3	Spring Washer
7	1	Compression Spring	50	1	Cap
8	2	Valve Screw	51	1	Spring Pin
9	2	Compression Spring	52	4	Bushing
10	2	Ball	53	1	Conical Pin
11	1	Compression Spring	54	1	Torsional Spring
12	1	Ball	55	1	Release Pin
13	1	Screw	56	1	FRP Pipe
14	2	Back Up Ring	57	1	Guide Bolt
15	2	O-Ring	58	1	Insulation Cap
16	1	Compression Spring	59	1	Robber Handle Tube
17	3	Ball	60	1	Extention Tube
18	1	Set Screw	61	1	FRP Pipe
19	1	Ball	62	1	Spring Pin
20	1	Set Screw	63	1	Insulation Tube
21	1	Relief Valve Set	64	1	Rubber Handle Tube
22	1		65	2	Socket Head Cap Screw
23	1		66	2	Crescent
24	1		67	1	Hinge Pin
25	1		68	1	Pumping Piston
26	1		69	1	Arresting Pin
27	2		O-Ring	70	1
28	1	O-Ring	71	1	Magnetic Bar
29	1	Solid Filter	72	1	Bung
30	1	Push-In Fastener	73	1	Main Piston
31	2	Compression Spring	74	1	Arresting Pin
32	1	Screw	75	1	Spring
33	1	Ball Seat	76	1	Compression Spring
34	1	Screw	77	1	Locating Pin
35	1	Insulation Cover	78	1	Back Up Ring
36	1	Hook Spring	79	1	O-Ring
37	1	O-Ring	80	1	Spring Rod
38	1	Funnel	81	1	Compression Spring Support
39	1	C Head	82	1	Inverse Ring
40	1	Spring Pin	83	1	Spring Pin
41	1	Locating Ring	84	1	Compression Spring
42	1	Stop Screw	85	1	O-Ring
43	1	Compression Spring	86	1	Back Up Ring

Diagram of Parts & Components



REV. : A2

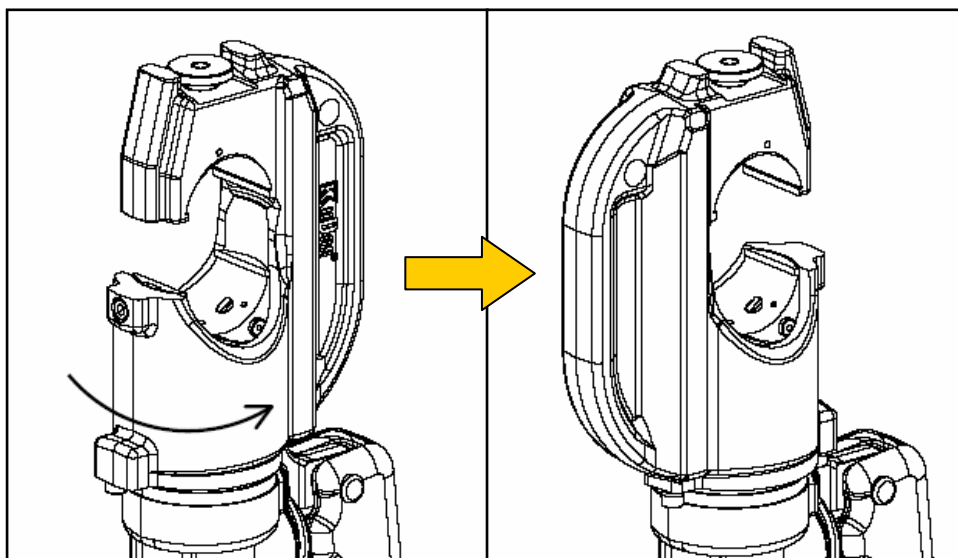
Characters & Functions

Specifications

■ Item	Hydraulic Hand Compression Crimper
■ Model No.	UB-412
■ Max. Pressure	700 bar / 10,000 psi
■ Max. Output	12 Tons
■ Dimensions	590mm(L)×150mm(W)×70mm(H)
■ Net Weight	4.4 kgs
■ Gross Weight	7.0 kgs
■ Accessories	KuDos plastic carrying case / Dies not included

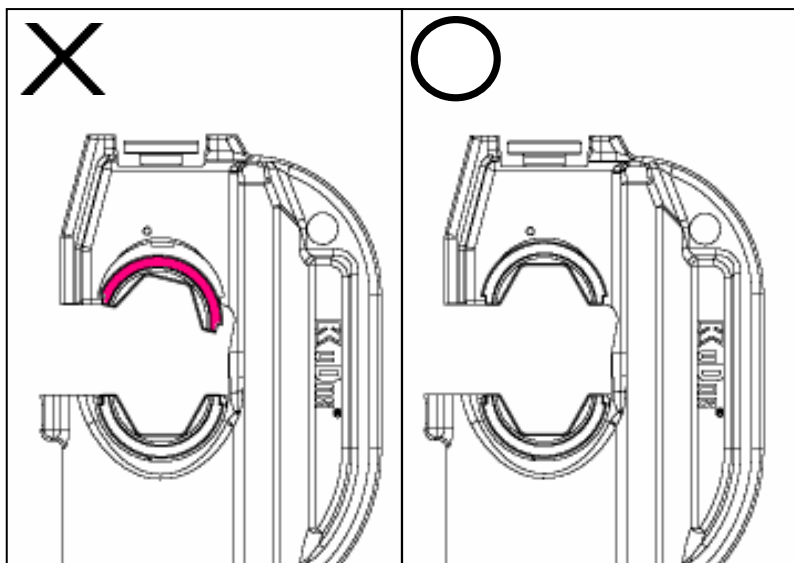


- C-Head open : 32 mm
- Max. compression : 32 mm Φ copper lugs
- Max. operating pressure : 700 bar / 10,000 psi
- External adjustable relief valve
- Pressure relief valve for overload protection
- Automatic low-/high-pressure conversion with rapid/mild operating Motion
- 180° rotating head



Operation Manual - I

- Make sure all parts of the product are clean and rustless.
- No leakage occurs while the product is not operated.
- No leakage occurs (either at low pressures or at high pressures) while the product is tested without cables.
- Hydraulic pressure should be able to reach 700 bar / 10,000 psi while tested without cables.
- Operations without dies in place are strictly prohibited.



- Check the cleanness of the product before use.
- Make sure no loose parts exist before use.
- Always use dies which fit the specifications. No overloaded compression is allowed.
- Stop operating immediately in case of any abnormalities.
(Please refer to "Page 8 : Trouble-Shooting")
 1. Compression of lugs cannot be implemented.
 2. Moving handle is stuck or is unable to rotate to release the pressure.
 3. Dies can not be set in place or can not be removed.
 4. The piston is stuck or is unable to retract after operation.
- Clean the product and dies after use. Apply rust preventive oil to the product and dies before putting back to the carrying case.

Limited Warranty

- Limited warranty of KuDos® goods are valid for a period of one year from the date of purchase.
- Receipt and warranty card are required for warranty services.
- This warranty is subject to the exclusions and limitations described below.
 1. This warranty does not cover damages of products which are **NOT** installed, operated, used and maintained in accordance with written instructions.
 2. This warranty does not cover damages resulted from isassemblies or attempted disassemblies by parties other than KuDos® or its authorized service representatives.
 3. This warranty does not cover damages caused by improper storage of the product, use of components not manufactured or authorized by KuDos®, acts of God, accidents, use in a manner for which they are not intended or use which is contrary to instructions for the product.
 4. This warranty does not cover ordinary wear and tear, which cannot be imputed to defects in material and workmanship.
- KuDos® 's liability in all cases is limited to, and shall not exceed, the purchase price paid.
- All revisions in warranty policy and product informations will be included in new versions of handbooks. Individual notification will **NOT** be issued.

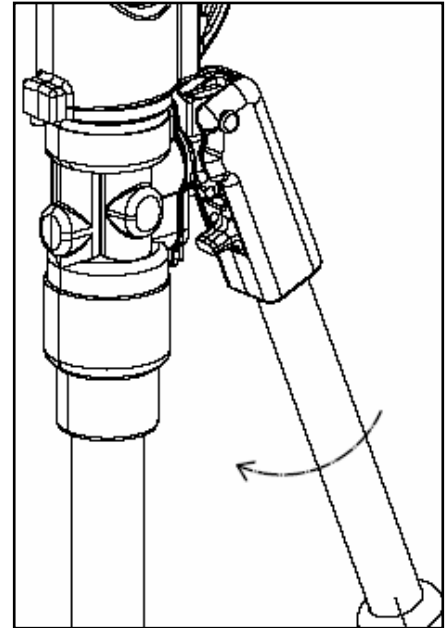
Maintenance

- Always keep the product clean. Any sands or impediments might cause malfunctions or even damages to the product. Routine renewal of hydraulic fluid is required.
 - Do **NOT** keep the product in places with high temperature, high humidity, or direct sunlight.
 - Operation with dies in accordance with the specifications in this handbook is required.
 - Inform KuDos® authorized distributors in case of any abnormalities or malfunctions of the product. Receipt and warranty card are required for warranty services.
- ✘ ***Do Not disassemble/repair or attempt to disassemble/repair the product.***
- Suggested working temperatures : $-10^{\circ}\text{C} \sim 40^{\circ}\text{C}$
 - Hydraulic fluid temperatures over 65°C might cause damages to components sealed inside the product. It might also damage the product severely.
 - The hydraulic fluid pressure should be adjusted only by KuDos® service representatives.
 - Do **NOT** operate the product without dies in place, or the C-head might be deformed or broken, the piston might be damaged, operators might even be injured.
 - To keep the product in best working conditions, do **NOT** slam it on the ground.

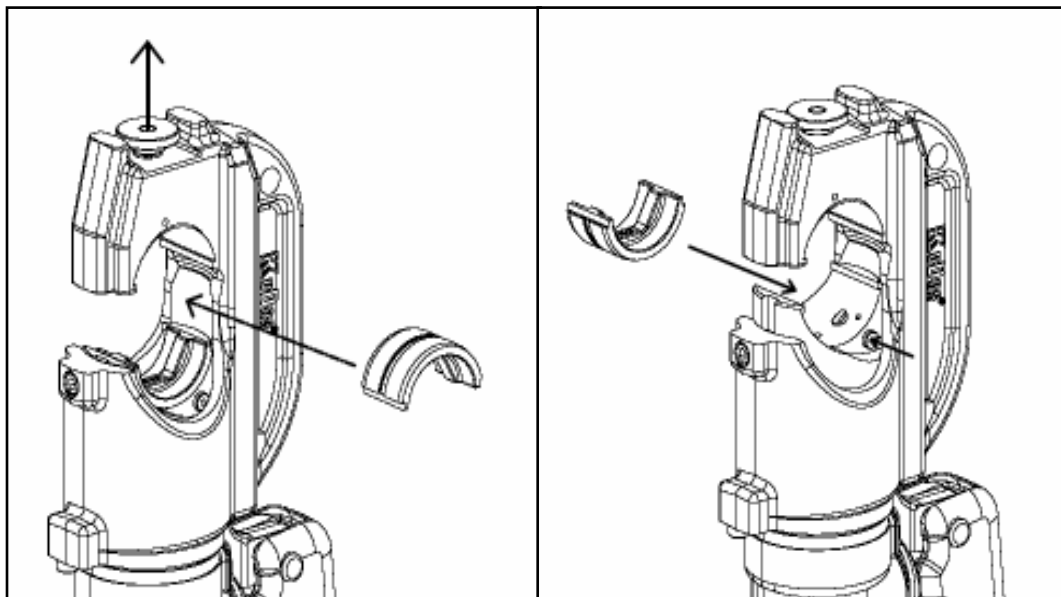


Operation Manual - II

1. Release the hydraulic fluid pressure and retract the piston before placing dies : Pull out the moving handle and rotate it clockwise, press down the release lever by pushing down the moving handle, release the moving handle and the product is ready to work when the piston returns to its starting position.

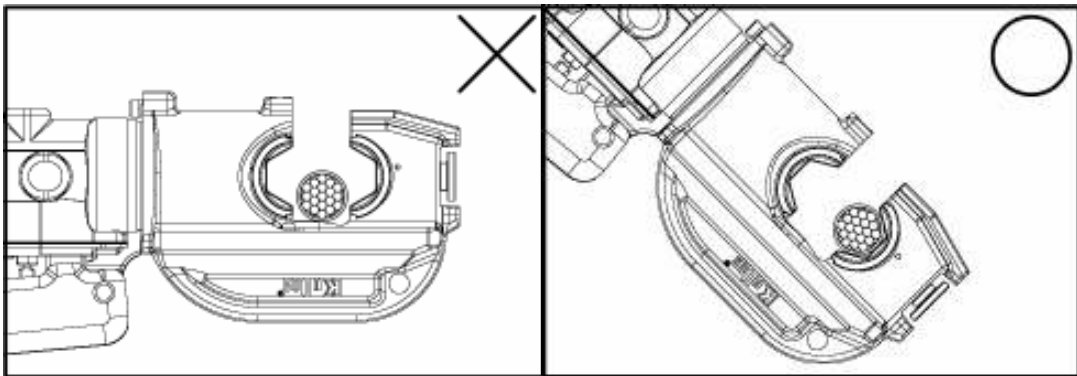


2. To place the upper die, pull up the spring pin (#40) and push the die into the open of C-head along its groove.
3. To place the lower die, press down the arresting pin (#74) and push the die into the open of C-head along its groove.



Operation Manual - III

4. Place the working cable and terminal into the open of C-head. To reach the best results, the cable and terminal must be positioned at the CENTER of the open top to balance the compression. It might damage the dies or even deform the C-head if the cable and terminal are off-center.



5. Exercise the moving handle back and forth to push the piston and lower die forwards.
6. The rapid motion of piston with low hydraulic pressure will convert to a slow motion with high pressure after the upper and lower dies are tightly pressed.
7. Operation completes when the hydraulic pressure reaches 700 bars at which the relief valve releases the internal pressure. Repeat step 1 and remove the cable. Pull up the spring pin (#40) to remove the upper die, and press down the arresting pin (#74) to remove the lower die.
8. Clean the product and dies after use. Apply rust preventive oil to the product and dies before putting them back to the carrying case.

Trouble-Shooting

- Compression of lugs cannot be implemented.
 - A. Insufficient hydraulic fluid : Routine refill or renewal of hydraulic fluid is required.
 - B. Internal leakage: Contact KuDos® service representatives.
 - ✘ ***Do NOT attempt to disassemble or repair the product.***
 - C. Operation instructions were not followed. The product or dies have been already damaged.
 - D. Applied cables or terminals are over-specification.

- Moving handle is stuck or is unable to rotate to release the pressure.
 - A. Clean the moving handle to remove impediments.
 - B. Contact KuDos® service representatives for stuck torsional spring.
 - ✘ ***Do NOT attempt to disassemble or repair the product.***
 - C. Pressure can be released by pressing down the release lever manually.

- Dies can not be set in place or can not be removed.
 - A. Deformed C-head or dies. Contact KuDos® service representatives.
 - ✘ ***Do NOT attempt to disassemble or repair the product.***
 - B. Clean the grooves on C-head to remove impediments.
 - C. Clean the die seats on C-head to remove impediments.

- The piston is stuck or is unable to retract after operation. The piston might be deformed by uneven stress distribution when the product was operated with off-center cables and terminal. Contact with KuDos® service representatives.
 - ✘ ***Do NOT attempt to disassemble or repair the product.***